

CATALOGUE
2018/2019







ABOUT THE BRAND

Reece Australia designs and markets attractive clothing and accessories for active lifestyles. With dynamic and versatile collections we aim to motivate you to get the best out of yourself. Whether you play just for fun or on the highest level.

Reece Australia is the proud clothing partner of international sports federations, European top teams and individual players with unique qualities. Even up to Olympic level! Beautiful partnerships arise from the shared philosophy of passion for sports and always striving for the highest achievable goals.

MISSION – What we stand for

To make you perform at your best.

VISION – What we aim for

To bring the best performance into active lifestyles.

VALUES – What we believe in

Passionate about sports

Sports and passion are inseparable. They form the heart and soul of Reece Australia. Sports and all the qualities it entails, like dedication, belief and pride. We believe in inner motivation as the key ingredient for success. We admire people who try to make a difference, who are willing to swim against the tide. In all the challenges that sports can bring, Reece Australia aims to be a supporting value. Our products support your activities and enable you to stand out and shine.

Focus on quality and design

Quality and design are the measuring sticks by which we make our decisions every day. Quality as an obvious requirement, design as a chance to make a difference. We sense a strong connection between the way you look and the way you feel. And feeling good is vital when you're active, because it gives you energy instead of taking it. Our designs aim to contribute to this energetic and confident feeling.

Performance and presence

Performance and presence: those are the two core values at which Reece Australia points its arrows. Two concepts that reinforce one another and can give you an invincible feeling. In this way what you wear can help you to achieve significant wins in life. With a versatile and fashionable sports collection, Reece Australia focuses on teams and athletes who believe in this power of presentation.



SPECIAL DESIGN

10



TEAM SPORTS

14

INFO

4

PARTNERSHIPS	4
SPECIAL DESIGN	10
TEAMDRESSER	12
CLUB REWARD SCHEME	13

TEAM SPORTS

14

MATCH CLOTHING

16

CORE SHIRT // LADIES	17
CORE SHIRT // UNISEX	19
EDEN SINGLET // LADIES	21
ISA CLIMATEC POLO // LADIES	23
DARWIN CLIMATEC POLO // UNISEX	25
FUNDAMENTAL SKORT // LADIES	27
LEGACY SHORT // UNISEX	29
WILLIAM SHORT // UNISEX	31
JAKE PANTS // UNISEX	31
LUKE GOALKEEPER SHIRT // UNISEX	33
CORE SPORTS BRA // LADIES	35
OLIVIA BRA // LADIES	35
AMY LONGSLEEVE // LADIES	37
BASELAYER // UNISEX	39

SOCKS

40

CURTAIN SOCK	41
COLLEGE SOCK	42
NUMBAA SPECIAL SOCK	43
UNI SOCK	44
COMBI SOCK	45
RING SOCK	46
LEAGUE SOCK	47
ORIGINAL SOCK	48
UNI FOOTLESS SOCK	49
RING FOOTLESS SOCK	49

TOPS & PANTS

50

VARSITY TTS JACKET FULL ZIP // LADIES	53
TTS PANTS // LADIES	53
VARSITY TTS JACKET FULL ZIP // UNISEX	55
TTS PANTS // UNISEX	55
CORE TTS HOODED SWEAT FULL ZIP // LADIES	57
TTS PANTS // LADIES	57
CORE TTS HOODED SWEAT FULL ZIP // UNISEX	59
TTS PANTS // UNISEX	59
CORE TTS TOP ROUND NECK // UNISEX	61
TTS PANTS // UNISEX	61
CORE WOVEN PANTS // LADIES	63
CORE WOVEN JACKET // LADIES	63
CORE WOVEN PANTS // UNISEX	65
CORE WOVEN JACKET // UNISEX	65
BREATHABLE TECH JACKET // LADIES	67
BREATHABLE TECH PANTS // LADIES	67
BREATHABLE TECH JACKET // UNISEX	69
BREATHABLE TECH PANTS // UNISEX	69
CANBERRA COACH JACKET // UNISEX	71
BREATHABLE TECH PANTS // UNISEX	71

SPORTSWEAR

72

VARSITY STRETCHED FIT JACKET FULL ZIP // LADIES	75
VARSITY STRETCHED FIT PANTS // LADIES	75
VARSITY HOODED ZIP SWEAT // LADIES	77
CLASSIC SWEAT PANTS // LADIES	77
CLASSIC SWEAT TOP ROUND NECK // LADIES	79
TULA SWEAT TOP ROUND NECK // LADIES	79
RUBY SWEAT PANTS // LADIES	79
KATE HOODED ZIP SWEAT // LADIES	81
KATE SWEAT PANTS // LADIES	81
CLASSIC TEE // LADIES	83
CLASSIC SWEAT SHORT // LADIES	83
SENNA HOTPANTS // LADIES	83
VARSITY STRETCHED FIT JACKET FULL ZIP // UNISEX	85

VARSITY STRETCHED FIT PANTS // UNISEX	85
VARSITY HOODED ZIP SWEAT // UNISEX	87
GREGORY JOGGING PANTS // UNISEX	87
CLASSIC SWEAT TOP ROUND NECK // UNISEX	89
CLASSIC TEE // UNISEX	89
VARSITY PUFFER JACKET // LADIES	91
JULIA QUILTED JACKET // LADIES	91
VARSITY PUFFER JACKET // UNISEX	93
NEWMAN BOMBER JACKET // UNISEX	93
PERFORMANCE JACKET // LADIES	97
PERFORMANCE TIGHT // LADIES	97
PERFORMANCE TOP HALF ZIP // LADIES	97
PERFORMANCE TIGHT 7/8 // LADIES	97
KIRAN MESH BOMBER JACKET // LADIES	99
LAUREN SHORT // LADIES	99
EDEN SINGLET // LADIES	99
JAI TIGHT // LADIES	99
MOON HALF ZIP // LADIES	99
ROSHAN SHORTS // LADIES	101
LEYLA TEE // LADIES	101
VARUN JACKET // LADIES	101
GEMMA ACTIVE PANTS // LADIES	101
EVE SPORTS BRA // LADIES	101
PERFORMANCE TOP HALF ZIP // UNISEX	103
PERFORMANCE JACKET // UNISEX	103
PERFORMANCE TIGHT // UNISEX	103
PERFORMANCE SHIRT // UNISEX	105
WILLIAM SHORT // UNISEX	105
JAKE PANTS // UNISEX	105

SPORTS EQUIPMENT

106

HOCKEY STICKS SENIOR

110

RX-130 SKILL HYPER CARBON STICK	111
RX-130 POWER HYPER CARBON STICK	111
RX-120 SKILL HYPER CARBON STICK	113
RX-120 POWER HYPER CARBON STICK	113



SPORTSWEAR

72



SPORTS EQUIPMENT

106

RX-110 SKILL HYPER CARBON STICK	115
RX-110 POWER HYPER CARBON STICK	115
RX-109 // COMPOSITE SENIOR STICK	115
RX-108 // COMPOSITE SENIOR STICK	117
RX-105 // COMPOSITE SENIOR STICK	117
RX-95 // COMPOSITE SENIOR STICK	118
RX-93 // COMPOSITE SENIOR STICK	118
RX-92 // COMPOSITE SENIOR STICK	119

HOCKEY STICKS JUNIOR 120

RX-90 // COMPOSITE JUNIOR STICK	120
RX-60 // WOODEN JUNIOR STICK	121

HOCKEY STICKS INDOOR 122

IX-135 // COMPOSITE SENIOR INDOOR STICK	122
IX-125 // COMPOSITE SENIOR INDOOR STICK	122
IX-97 // COMPOSITE SENIOR INDOOR STICK	122
IX-92 // WOODEN SENIOR INDOOR STICK	123
IX-65 // WOODEN JUNIOR INDOOR STICK	123

HOCKEY SHOES 124

REVOLUTION X-BLADE HOCKEY SHOE	125
DEVOON HOCKEY SHOE	127
SHARK HOCKEY SHOE	127
BULLY X80 HOCKEY SHOE OUTDOOR	128
BULLY X80 HOCKEY SHOE INDOOR	129

BAGS 130

SIMPSON HOCKEY BAG	130
NORTHAM BACKPACK	131
BACKPACK XL	132
EVANS HOCKEY BACKPACK	132
GIANT STICK BAG	133
JUNIOR STICK BAG	133
TROLLEY BAG MEDIUM	134
TROLLEY BAG LARGE	134

NOTEBOOK BAG	135
GLENFIELD BALL BAG	135
BUNBURY SPORTS BAG	135
DERBY BACKPACK	136
DERBY STICK BAG SMALL	137
DERBY STICK BAG	137

PROTECTION 138

SHINGUARD ELMORE	138
SHINGUARD FOSTER	138
SHINGUARD GECKO	138
SHINGUARD BLACKBULL MESH	138
SHINGUARD LAVERTON	138
MOUTHGUARD DENTAL IMPACT SHIELD	139
MOUTHGUARD CLARE	139
CONTROL PROTECTION GLOVE	140
PROTECTION GLOVE HALF FINGER	140
COMFORT GLOVE HALF FINGER	140
ELITE FASHION GLOVE HALF FINGER	140
PROTECTION GLOVE FULL FINGER	141
COMFORT GLOVE FULL FINGER	141
ELITE PROTECTION GLOVE FULL FINGER	141
KNITTED PLAYER GLOVE	142
KNITTED PLAYER GLOVE 2 IN 1	142
POWER PLAYER GLOVE	142

ASM ADAPTABALL & STICKS 143

ASM ADAPTABALL	143
ASM REV3RSE HOCKEY STICK	143

BALLS 144

HOCKEY BALLS DIMPLE PREMIUM	144
HOCKEY BALLS DIMPLE ULTRA	144
HOCKEY BALLS MATCH ULTRA	144
HOCKEY BALLS MATCH	144
HOCKEY BALLS GLITTER	145

HOCKEY BALLS STREET	145
HOCKEY BALLS FANTASY	145
HOCKEY BALLS INDOOR	145

ACCESSORIES 146

PROFESSIONAL HOCKEY GRIP	146
DESIGN HOCKEY GRIP	146
CHAMOIS GRIP	146
COTTON TAPE	146
LAKELAND MESH BIBS	147
REFEREE CARD SET	147
STOPWATCH	147
REFEREE WHISTLE FOX 40	147
CAMDEN HAIRBAND	148
HAIRBAND NON SLIP	148
FOCUS HEADBAND	148
WRISTBAND	149
KNITTED FASHION HAT	149
BOTTLE SET	149
DALBY BOTTLE	149

INFO 150

INSTAGRAM	150
REGISTER	152
SIZE CHARTS & SYMBOLS	153

PROUD PARTNER

Reece Australia is the proud clothing partner of sport at the highest level. International sports federations, European top teams and individual players with unique qualities have committed to our brand. Our sponsorships challenge us to always and every day go for the best.

NATIONAL HOCKEY TEAM MEN, GERMANY



NATIONAL HOCKEY TEAM WOMEN, GERMANY



The players of the German team were closely involved with the design of the national shirts. Together with the designers of Reece Australia, a design was achieved that provided the team with their desired appearance. The shirt reflects the dynamics of the game, with details that tell the unique story of the team. The collar forms the beak of the famous German eagle, as a powerful symbol for unity and team spirit.



SV KAMPONG HOCKEY MEN, UTRECHT, THE NETHERLANDS



SV KAMPONG HOCKEY WOMEN, UTRECHT, THE NETHERLANDS



The cooperation between Reece Australia and SV Kampong goes way back. For the shirt, this means classic blue and white as a base from day one, the solid colours of SV Kampong. The prominent logo on the chest, with the name Kampong (Malay for 'a small village') and the characteristic palm tree, refers to the rich history of the club.

NATIONAL HOCKEY TEAM MEN, BELGIUM



© WSP/Koen Suyk



"L'union fait la force", unity is strength. A telling phrase on the coat of arms of Belgium, that perfectly matches the power of team sport. The sentence formed the base for the Belgian shirt design, which among other things is characterized by subtle mesh surfaces and an optimal fit.

NATIONAL HOCKEY TEAM WOMEN, BELGIUM



© WSP/Frank Uijlenbroek



HC ORANJE-ROOD MEN, EINDHOVEN, THE NETHERLANDS



HOCKEYCLUB
ORANJE-ROOD

HC Oranje-Rood, which originated in 2016 from the merger of MHC Oranje Zwart and EMHC, chose a new shirt that fits perfectly with the new name: with orange and red surfaces divided over the kit. The old shirts of both clubs are, moreover, collected for hockey players in developing countries and donated to charity.

HC ORANJE-ROOD WOMEN, EINDHOVEN, THE NETHERLANDS





DHB 
Deutscher
Hockey-Bund e.V.

**RABO EUROHOCKEY
CHAMPIONSHIPS 2017
AMSTERDAM, THE NETHERLANDS
GERMANY - POLAND**

august 2017





**RABO EUROHOCKEY
CHAMPIONSHIPS 2017
AMSTERDAM, THE NETHERLANDS
SPAIN - BELGIUM**

august 2017



SPECIAL DESIGN:

"THE **POWER** OF **PRESENTATION**"



Reece believes in the power of presentation. A team that enters the field in perfect team clothing with a strong club appearance, is already leading 1-0. Reece believes that team clothing can make a difference. And that's why we make Special Design.

Special Design is wanting that little bit more. A shirt that exactly reflects your team identity. A shirt that gives a huge boost to the team spirit. With Special Design from Reece Australia, you create a kit that no one else has. Something special. A kit that tells who you are as a club. Your heritage, your tradition.



© WSP/Koen Suyk

In collaboration with the designers of Reece Australia you design a shirt, shorts/skort and socks with a unique appearance. You get the high quality and perfect fit that we are recognised for, combined with a design that perfectly fits the character of your team.

A design in one colour, in different colours, with a certain collar or cuffs or an integrated club logo, anything is possible. Even the socks can be produced in the clubs colours, with a knitted club logo. This perfectly represents the impressive appearance of Special Design.

New: Special Design is now offered from 15 pieces!

Extra: hooded sweats

Special design hooded sweats complete the picture and give teams a uniform appearance even before and after the match. The hooded sweats are made of the softest materials for optimum comfort.



Extra: hockey balls

Reece Australia can even develop hockey balls with a club look-and-feel. The club logo can be printed on the ball (2.5 x 2.5 cm). On the other side the Reece Australia logo is printed.



For more **information** and **conditions**, please visit: Reeceaustralia.com/int/specialdesign



TEAMDRESSER

Free online tool with the complete
Reece Australia collection



Make your team selection



Easy drag & drop



Save and adjust



Clear pricing overview



Create



Print, email, share



teamdresser.com



Create & Share



Create your
outfit presentation

CLUB REWARD SCHEME

Reece Australia would like to introduce you to its brand-new Sponsorship Package! The package is an ideal opportunity for clubs and organisations looking to form a solid, stable partnership with Reece Australia.

EXCELLENT STOCK LEVELS

PRODUCT CONTINUITY

FANTASTIC SERVICE

GREAT QUALITY PRODUCT



For more information and conditions, please visit:

REECEAUSTRALIA.COM/INT/CLUB-CONTRACT



TEAM SPORTS







Mix & Match

Fundamental Skort // Ladies

Curtain Sock

Devoon Hockey Shoe

RX-105 // Composite Senior Stick

page 27

page 41

page 127

page 117



bright royal
810601 - 5160



bright red
810601 - 6710



black
810601 - 8000



navy
810601 - 7000



white
810601 - 2000



orange
810601 - 3000



knockout pink
810601 - 3888

CORE SHIRT // LADIES

Material: 92% polyester, 8% elastane

JUNIOR: 128 - 140 - 152 / SENIOR: XS - S - M - L - XL - XXL



SPECIFICATIONS

- » comfortable sports shirt with ladies fit
- » ClimaTec finish keeps your skin dry
- » raglan sleeve insert for optimal freedom of movement
- » collar, shoulders and sides contain ventilating mesh inserts
- » printed logo on chest and back



*Very suitable for printing.
(Dealer takes care of printing.)



Mix & Match

William Short // Unisex
Revolution X-Blade Hockey Shoe
Combi Sock

page 31
page 125
page 45



bright royal
810201 - 5160



bright red
810201 - 6710



black
810201 - 8000



navy
810201 - 7000



white
810201 - 2000



orange
810201 - 3000

CORE SHIRT // UNISEX

Material: 92% polyester, 8% elastane

JUNIOR: 128 - 140 - 152 - 164 / SENIOR: S - M - L - XL - XXL - XXXL

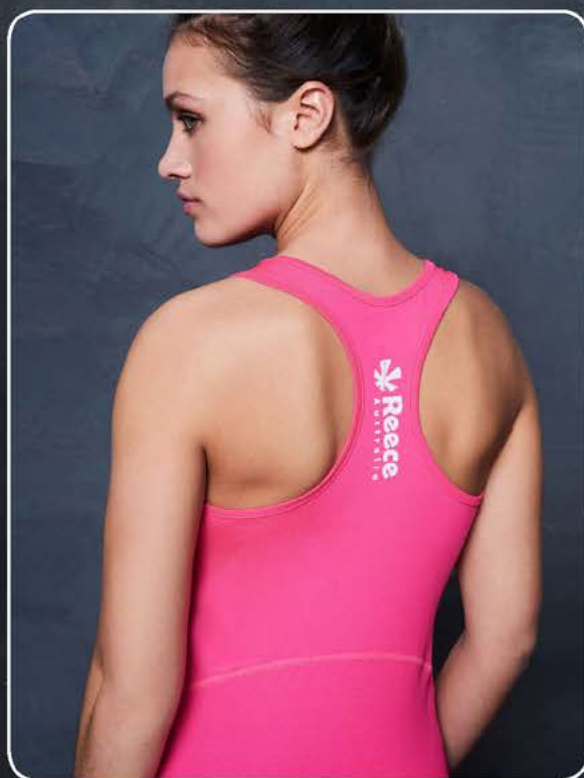
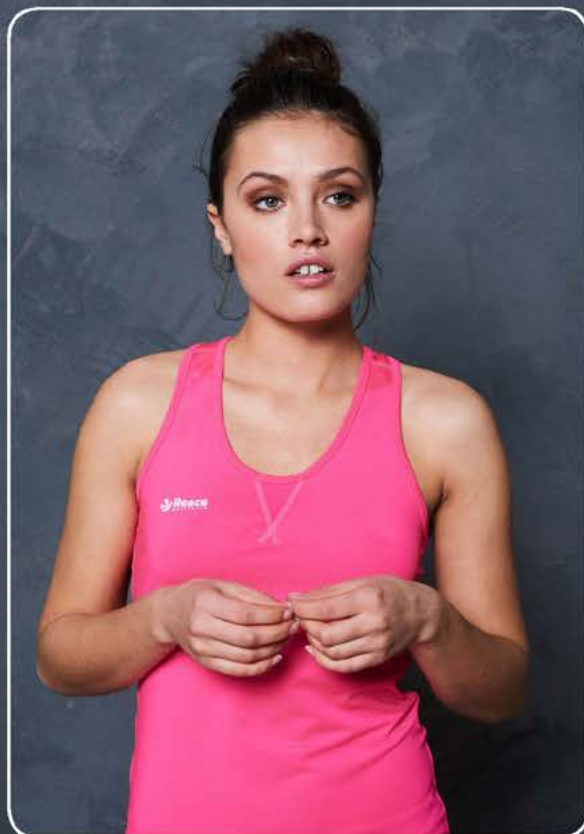


SPECIFICATIONS

- » comfortable sports shirt
- » slim fit
- » ClimaTec finish keeps your skin dry
- » raglan sleeve insert for optimal freedom of movement
- » collar, shoulders and sides contain ventilating mesh inserts
- » printed logo on chest and back



*Very suitable for printing.
(Dealer takes care of printing.)



Mix & Match

Fundamental Skort // Ladies

Curtain Sock

Shark Hockey Shoe

RX-95 // Composite Senior Stick

page 27

page 41

page 127

page 118



royal
869615 - 5000
JUNIOR: 128 - 140 - 152 / SENIOR: XS - S - M - L - XL



black
869615 - 8000
SENIOR: XS - S - M - L - XL



neon yellow
869615 - 4190
JUNIOR: 128 - 140 - 152 / SENIOR: XS - S - M - L - XL



neon coral
869615 - 3081
JUNIOR: 128 - 140 - 152 / SENIOR: XS - S - M - L - XL

EDEN SINGLET // LADIES

Material: 92% polyester, 8% elastane

JUNIOR: 128 - 140 - 152 / SENIOR: XS - S - M - L - XL



SPECIFICATIONS

- » ladies fit with racerback
- » ClimaTec finish keeps your skin dry
- » breathable mesh insert on lower back
- » slim fit
- » logo between shoulder blades



*Very suitable for printing.
(Dealer takes care of printing.)



knockout pink
869615 - 3888
SENIOR: XS - S - M - L - XL



Mix & Match

Fundamental Skort // Ladies

Curtain Sock

Shark Hockey Shoe

page 27

page 41

page 127



bright royal
863107 - 5160



bright red
863107 - 6710



black
863107 - 8000



navy
863107 - 7000



white
863107 - 2000



orange
863107 - 3000



sun yellow
863107 - 4020



sky blue
863107 - 5210



burgundy
863107 - 6690



bottle green
863107 - 1020

ISA CLIMATEC POLO // LADIES

Material: 100% polyester with ClimaTec

JUNIOR: 128 - 140 - 152 / SENIOR: XS - S - M - L - XL - XXL



SPECIFICATIONS

- » ladies fit
- » breathable material
- » lightweight
- » ClimaTec finish keeps your skin dry
- » small split in the side and slightly longer back
- » printed logo on left sleeve



*Very suitable for printing.
(Dealer takes care of printing.)



Mix & Match

William Short // Unisex

Uni Sock

Devoon Hockey Shoe

page 31

page 44

page 127

DARWIN CLIMATEC POLO // UNISEX

Material: 100% polyester with ClimaTec

JUNIOR: 128 - 140 - 152 - 164 / SENIOR: S - M - L - XL - XXL - XXXL



SPECIFICATIONS

- » breathable material
- » lightweight and quick drying
- » ClimaTec finish keeps your skin dry
- » small split in the side and slightly longer back
- » printed logo on left sleeve



bright royal
863106 - 5160



bright red
863106 - 6710



black
863106 - 8000



navy
863106 - 7000



*Very suitable for printing.
(Dealer takes care of printing.)



white
863106 - 2000



orange
863106 - 3000



sun yellow
863106 - 4020



sky blue
863106 - 5210



burgundy
863106 - 6690



bottle green
863106 - 1020



Mix & Match

Core Shirt // Ladies

Curtain Sock

Shark Hockey Shoe

page 17

page 41

page 127



bright royal
839101 - 5160



bright red
839101 - 6710



black
839101 - 8000



navy
839101 - 7000



white
839101 - 2000



sport grey
839101 - 9180



knockout pink
839101 - 3888



burgundy
839101 - 6690

FUNDAMENTAL SKORT // LADIES

Material: 92% polyamide, 8% elastane

JUNIOR: 116 - 128 - 140 - 152 / SENIOR: XS - S - M - L - XL - XXL



SPECIFICATIONS

- » skort with integrated inner shorts
- » breathable material
- » ClimaTec finish keeps your skin dry
- » soft feel, optimum comfort
- » flatlock stitching



*Very suitable for printing.
(Dealer takes care of printing.)

Skort with integrated shorts.



Mix & Match

Core Shirt // Unisex

Uni Sock

Revolution X-Blade Hockey Shoe

RX-120 Skill Hyper Carbon Hockey Stick

page 19

page 44

page 125

page 113



bright royal
837101 - 5160



bright red
837101 - 6710



black
837101 - 8000



navy
837101 - 7000



white
837101 - 2000



sport grey
837101 - 9180



burgundy
837101 - 6690



bottle green
837101 - 1020

LEGACY SHORT // UNISEX

Material: 100% micro polyester

JUNIOR: 116 - 128 - 140 - 152 - 164 / SENIOR: S - M - L - XL - XXL



SPECIFICATIONS

- » multifunctional shorts
- » soft feel, optimum comfort
- » ventilating mesh zones
- » two side pockets with zip
- » inner pants
- » elastic waistband with drawstring



*Very suitable for printing.
(Dealer takes care of printing.)



Mix & Match

Core Shirt // Unisex

College Sock

Revolution X-Blade Hockey Shoe

RX-105 // Composite Senior Stick

page 19

page 42

page 125

page 117



black
838103 - 8000



navy
838103 - 7000



white
838103 - 2000

WILLIAM SHORT // UNISEX

Material: 96% polyester, 4% elastane

SENIOR: S - M - L - XL - XXL



SPECIFICATIONS

- » multifunctional shorts
- » made from an elastic, woven polyester for optimum comfort
- » ventilating mesh zones
- » two side pockets with zip (also suitable for tennis balls)
- » inner pants
- » elastic waistband with drawstring



*Very suitable for printing.
(Dealer takes care of printing.)



black
834624 - 8000



navy
834624 - 7000

JAKE PANTS // UNISEX

Material: 96% polyester, 4% elastane

SENIOR: S - M - L - XL - XXL



SPECIFICATIONS

- » suitable for sports and casual wear
- » made from an elastic, woven polyester for optimum comfort
- » long zip at the bottom of the legs
- » two side pockets with zip (also suitable for tennis balls)
- » breathable mesh panels on the sides, back and back of the knee



*Very suitable for printing.
(Dealer takes care of printing.)



Mix & Match

William Short // Unisex

Uni Sock

Revolution X-Blade Hockey Shoe

RX-110 Skill Hyper Carbon Hockey Stick

page 31

page 44

page 125

page 115



black - neon yellow
815302 - 8410



shocking orange - black
815302 - 3840



neon pink - deep blue
815302 - 6164

LUKE GOALKEEPER SHIRT // UNISEX

Material: 100% polyester

JUNIOR: 140/152 - 164/S / SENIOR: M/L - XL/XXL



SPECIFICATIONS

- » loose fit, suitable to wear protective clothing underneath
- » cuffs finished with comfortable rib material
- » high stretch content
- » sublimated pattern on the sleeves and side
- » contrasting coloured piping
- » slightly longer back



*Very suitable for printing.
(Dealer takes care of printing.)



Mix & Match

Fundamental Skort // Ladies

page 27



black
846601 - 8000



pink
846601 - 6320

CORE SPORTS BRA // LADIES

Material: 95% polyamide, 5% elastane

SENIOR: XS/S - M/L - XL/XXL



SPECIFICATIONS

- » sturdy sports bra (medium support)
- » quick-drying
- » seamless and fully lined
- » ventilating mesh zones
- » racerback design
- » soft elastic shoulder straps
- » chest band made of fine rib material



grey melange
846602 - 9160



knockout pink
846602 - 3888



brook green
846602 - 1002

OLIVIA BRA // LADIES

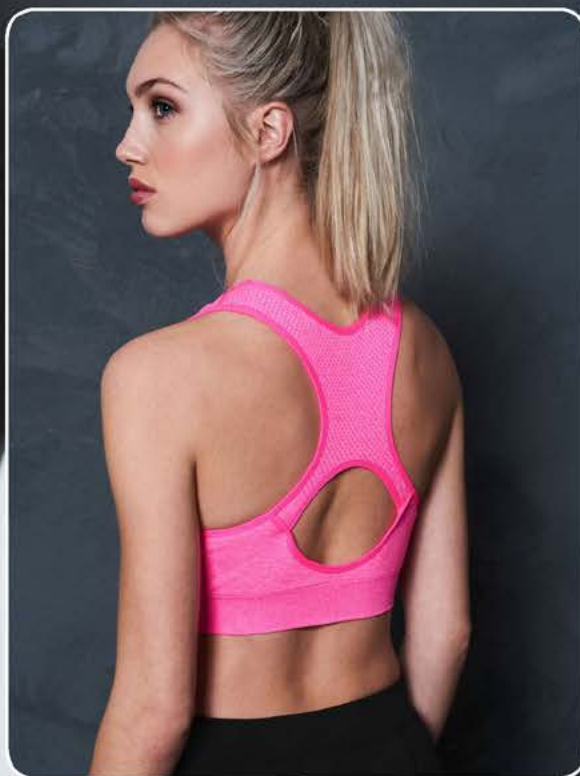
Material: 65% polyamide, 35% elastane

SENIOR: XS/S - M/L



SPECIFICATIONS

- » sturdy sports bra (medium support)
- » removable pads
- » seamless
- » ventilating mesh zones
- » racerback design
- » soft elastic shoulder straps
- » chest band made of fine rib material



Mix & Match

Olivia Bra // Ladies

Performance Tight // Ladies

page 35
page 97



grey melange
869604 - 9160

AMY LONGSLEEVE // LADIES

Material: 65% polyamide, 30% polyester,
5% elastane

SENIOR: XS/S - M/L



SPECIFICATIONS

- » ideal shirt for various training sessions
- » sweat-wicking material keeps the skin dry
- » seamless for optimal comfort
- » lightweight
- » ladies fit: optimizes your body shape
- » comfy thumb holes keep your hands warm
- » thermal properties: ideal underlayer in winter



knockout pink
869604 - 3888



brook green
869604 - 1002



Mix & Match

Gregory Jogging Pants // Unisex

page 87



black
846206 - 8000



white
846206 - 2000

BASELAYER // UNISEX

Material: 93% polyamide, 7% elastane

SENIOR: XS/S - M/L - XL/XXL



SPECIFICATIONS

- » slim fit undershirt
- » ideal for outdoor sports in cold weather
- » breathable material keeps the skin dry
- » moisture-permeable fiber in strategic zones
- » high collar for extra warmth
- » flat seams for extra comfort



royal - diva pink
840116 - 5364



pink
840116 - 0060



diva pink - white
840116 - 3646



blue - neon pink
840116 - 5066



CURTAIN SOCK

Material: 70% polyamide, 20% polypropylene,
7% elastane, 3% cotton

JUNIOR: 25/29 - 30/35 / SENIOR: 36/40 - 41/44



SPECIFICATIONS

- » striking designs
- » perfect fit
- » anatomical foot
- » flat seams for extra comfort
- » elastic band
- » colour fast
- » non shrink
- » left/right fitting
- » knitted size indication in sole



blue - orange
840116 - 5333



pink - white - blue
840116 - 6745



green - pink
840116 - 1480



pink - neon yellow
840116 - 6460



COLLEGE SOCK

Material: 70% polyamide, 20% polypropylene,
7% elastane, 3% cotton

JUNIOR: 25/29 - 30/35 / SENIOR: 36/40 - 41/44



SPECIFICATIONS

- » perfect fit
- » anatomical foot
- » flat seams for extra comfort
- » elastic board
- » colour fast
- » non shrink
- » left/right fitting
- » knitted size indication in sole



neon yellow
840110 - 4190

pink
840110 - 0060

neon green
840110 - 1080

neon orange
840110 - 5179

bright royal
840110 - 5160

NUMBAA SPECIAL SOCK

Material: 70% polyamide, 20% polypropylene,
7% elastane, 3% cotton

JUNIOR: 25/29 - 30/35 / SENIOR: 36/40 - 41/44



SPECIFICATIONS

- » striking designs
- » perfect fit
- » anatomical foot
- » flat seams for extra comfort
- » elastic board
- » colour fast
- » non shrink
- » left/right fitting
- » knitted size indication in sole



neon pink - purple
840115 - 6162

coral - diva pink
840115 - 3086

royal - neon yellow
840115 - 5419

burgundy - shocking orange
840115 - 6633

white - black
840115 - 0450



neon pink - neon green
840115 - 6163

white - neon pink
840115 - 2601

army green - neon green
840115 - 1062

royal - navy
840115 - 5700

neon coral - red
840115 - 3066

UNI SOCK

Material: 86% polypropylene, 8% elastane,
4% cotton, 2% polyamide

JUNIOR: 25/29 - 30/35 / SENIOR: 36/40 - 41/44 - 45/48



SPECIFICATIONS

- » perfect fit
- » anatomical foot
- » flat seams for extra comfort
- » elastic board
- » colour fast
- » non shrink
- » left/right fitting
- » knitted size indication in sole



white 440107 - 2000 yellow 440107 - 4000 neon yellow 440107 - 4190 orange 440107 - 3000



neon orange 440107 - 3230 pink 440107 - 0060 red 440107 - 6000 maroon 440107 - 6090 purple 440107 - 0130 sky blue 440107 - 5210 royal 440107 - 5000



navy 440107 - 7000 lime 440107 - 1740 bright green 440107 - 1340 green 440107 - 1000 bottle green 440107 - 1020 anthracite 440107 - 9990 black 440107 - 8000

COMBI SOCK

Material: 86% polypropylene, 8% elastane,
4% cotton, 2% polyamide

JUNIOR: 25/29 - 30/35 / SENIOR: 36/40 - 41/44 - 45/48



SPECIFICATIONS

- » perfect fit
- » anatomical foot
- » flat seams for extra comfort
- » elastic board
- » colour fast
- » non shrink
- » left/right fitting
- » knitted size indication in sole



white - red
440106 - 2600



white - royal
440106 - 2500

white - black
440106 - 2800

yellow - black
440106 - 4800

orange - white
440106 - 3200

orange - black
440106 - 3800

red - white
440106 - 6200

maroon - sky blue
440106 - 6050



royal - white
440106 - 5200

royal - yellow
440106 - 5400

navy - sky blue
440106 - 7550

green - white
440106 - 0610

black - white
440106 - 8200

black - yellow
440106 - 8400

black - red
440106 - 8600

RING SOCK

Material: 86% polypropylene, 8% elastane,
4% cotton, 2% polyamide

JUNIOR: 25/29 - 30/35 / SENIOR: 36/40 - 41/44 - 45/48



SPECIFICATIONS

- » perfect fit
- » anatomical foot
- » flat seams for extra comfort
- » elastic board
- » colour fast
- » non shrink
- » left/right fitting
- » knitted size indication in sole



white - black
440105 - 2800

yellow - royal
440105 - 4500



yellow - green
440105 - 4100

yellow - black
440105 - 4800

orange - white
440105 - 3200

orange - black
440105 - 3800

red - white
440105 - 6200

red - yellow
440105 - 6400

red - black
440105 - 6800



royal - white
440105 - 5200

royal - yellow
440105 - 5400

green - white
440105 - 0610

black - white
440105 - 8200

black - yellow
440105 - 8400

black - red
440105 - 8600

black - red - white
440105 - 8690

LEAGUE SOCK

Material: 86% polypropylene, 8% elastane,
4% cotton, 2% polyamide

JUNIOR: 25/29 - 30/35 / SENIOR: 36/40 - 41/44 - 45/48



SPECIFICATIONS

- » perfect fit
- » anatomical foot
- » flat seams for extra comfort
- » elastic board
- » colour fast
- » non shrink
- » left/right fitting
- » knitted size indication in sole



white - black -
white
440114 - 2810

white - red -
black
440114 - 2680

white - royal -
black
440114 - 2580



yellow - white -
royal
440114 - 4250

yellow - white -
black
440114 - 4280

amber - black -
white
440114 - 4830

orange - white -
black
440114 - 3280

red - white -
black
440114 - 6280

maroon - white -
sky blue
440114 - 6330

sky blue - white -
navy
440114 - 5730



royal - yellow -
white
440114 - 5420

royal - red -
white
440114 - 5620

royal - white -
black
440114 - 5280

navy - yellow -
white
440114 - 7420

navy - red -
white
440114 - 7620

green - white -
black
440114 - 1280

anthracite - white -
aqua
440114 - 9370

ORIGINAL SOCK

Material: 86% polypropylene, 8% elastane,
4% cotton, 2% polyamide

JUNIOR: 25/29 - 30/35 / SENIOR: 36/40 - 41/44 - 45/48



SPECIFICATIONS

- » perfect fit
- » anatomical foot
- » flat seams for extra comfort
- » elastic board
- » colour fast
- » non shrink
- » left/right fitting
- » knitted size indication in sole



white - red
440108 - 2600

white - royal
440108 - 2500

white - green
440108 - 2100

white - black
440108 - 2800



yellow - black
440108 - 4800

red - white
440108 - 6200

red - yellow
440108 - 6400

red - black
440108 - 6800

royal - white
440108 - 5200

black - white
440108 - 8200

black - yellow
440108 - 8400

UNI FOOTLESS SOCK

Material: 92% polypropylene, 8% elastane

MINI - JUNIOR - SENIOR



SPECIFICATIONS

- » durable fabric
- » ideal to combine with ankle brace
- » 100% colour fast
- » shrink-free
- » optimal comfort
- » soft fabric provides from skin irritation



white 440112 - 2000 yellow 440112 - 4000 orange 440112 - 3000 red 440112 - 6000



deep blue 440112 - 5640 royal 440112 - 5000 navy 440112 - 7000 green 440112 - 1000 black 440112 - 8000

RING FOOTLESS SOCK

Material: 92% polypropylene, 8% elastane

MINI - JUNIOR - SENIOR



SPECIFICATIONS

- » durable fabric
- » ideal to combine with ankle brace
- » 100% colour fast
- » shrink-free
- » optimal comfort
- » soft fabric provides from skin irritation



white - black 440111 - 2800 yellow - royal 440111 - 4500 yellow - black 440111 - 4800 orange - black 440111 - 3800 red - white 440111 - 6200



red - black 440111 - 6800 royal - white 440111 - 5200 royal - black 440111 - 5800 green - black 440111 - 1800 black - white 440111 - 8200







Mix & Match

Revolution X-Blade Hockey Shoe

page 125



royal - white
808647 - 5200
SR: XS - S - M - L - XL

red - white
808647 - 6200
SR: XS - S - M - L - XL

navy - white
808647 - 7200
SR: XS - S - M - L - XL



black - white
808647 - 8200
SR: XS - S - M - L - XL



diva pink
808647 - 3648
JR: 128 - 140 - 152
SR: XS - S - M - L - XL

VARSITY TTS JACKET FULL ZIP // LADIES

Material: 100% polyester

JUNIOR: 128 - 140 - 152 / SENIOR: XS - S - M - L - XL



SPECIFICATIONS

- » comfortable top made of smooth TTS material
- » ideal for wearing before, during and after sports
- » feminine fit
- » soft, brushed inner
- » two side pockets with zip
- » elastic cuffs
- » contrasting coloured piping in the side



*Very suitable for printing.
(Dealer takes care of printing.)



black
834634 - 8000



navy
834634 - 7000

TTS PANTS // LADIES

Material: 100% polyester

SENIOR: XS - S - M - L - XL



SPECIFICATIONS

- » comfortable training pants
- » ladies fit
- » brushed inner for optimal comfort
- » two side pockets with zip
- » high zips along lower leg
- » elastic waistband with drawstring



*Very suitable for printing.
(Dealer takes care of printing.)



Mix & Match

Shark Hockey Shoe

page 127



royal - white
808002 - 5200



red - white
808002 - 6200



black - white
808002 - 8200



navy - white
808002 - 7200

VARSITY TTS JACKET FULL ZIP // UNISEX

Material: 100% polyester

JUNIOR: 128 - 140 - 152 - 164 / SENIOR: S - M - L - XL - XXL



SPECIFICATIONS

- » comfortable top made of smooth TTS material
- » ideal for wearing before and after sports
- » soft, brushed inner
- » two side pockets with zip
- » elastic cuffs
- » contrasting coloured piping in the side
- » embroidered logos on the arm
- » printed logo on the chest



*Very suitable for printing.
(Dealer takes care of printing.)



black
832102 - 8000



navy
832102 - 7000

TTS PANTS // UNISEX

Material: 100% polyester

JUNIOR: 128 - 140 - 152 - 164 / SENIOR: S - M - L - XL - XXL



SPECIFICATIONS

- » comfortable training pants
- » brushed inner for optimal comfort
- » two side pockets with zip
- » high zips along lower leg
- » elastic waistband with drawstring



*Very suitable for printing.
(Dealer takes care of printing.)





royal
808639 - 5000
SR: XS - S - M - L - XL

red
808639 - 6000
SR: XS - S - M - L - XL

navy
808639 - 7000
SR: XS - S - M - L - XL

CORE TTS HOODED SWEAT FULL ZIP // LADIES

Material: 100% polyester

JUNIOR: 128 - 140 - 152 / SENIOR: XS - S - M - L - XL



SPECIFICATIONS

- » sporty hooded jacket
- » ideal for casual, training and sports
- » soft inside
- » feminine shape and slightly longer fit
- » two zipped pockets on the front
- » collar and cuffs made of elastic rib material
- » hood provides extra warmth



black
808639 - 8000
SR: XS - S - M - L - XL

white
808639 - 2000
SR: XS - S - M - L - XL

orange
808639 - 3000
SR: XS - S - M - L - XL

purple - black
808001 - 6411
JR: 128 - 140 - 152
SR: XS - S - M - L



*Very suitable for printing.
(Dealer takes care of printing.)



black
834634 - 8000



navy
834634 - 7000

TTS PANTS // LADIES

Material: 100% polyester

SENIOR: XS - S - M - L - XL



SPECIFICATIONS

- » comfortable training pants
- » ladies fit
- » brushed inner for optimal comfort
- » two side pockets with zip
- » high zips along lower leg
- » elastic waistband with drawstring



*Very suitable for printing.
(Dealer takes care of printing.)



Mix & Match

Shark Hockey Shoe

page 127



royal
808640 - 5000

red
808640 - 6000

black
808640 - 8000



navy
808640 - 7000

white
808640 - 2000

orange
808640 - 3000

CORE TTS HOODED SWEAT FULL ZIP // UNISEX

Material: 100% polyester

JUNIOR: 128 - 140 - 152 - 164 / SENIOR: S - M - L - XL - XXL



SPECIFICATIONS

- » sporty hooded jacket
- » ideal for casual, training and sports
- » soft inside
- » feminine shape and slightly longer fit
- » two zipped pockets on the front
- » collar and cuffs made of elastic rib material
- » hood provides extra warmth



*Very suitable for printing.
(Dealer takes care of printing.)



black
832102 - 8000



navy
832102 - 7000

TTS PANTS // UNISEX

Material: 100% polyester

JUNIOR: 128 - 140 - 152 - 164 / SENIOR: S - M - L - XL - XXL



SPECIFICATIONS

- » comfortable training pants
- » brushed inner for optimal comfort
- » two side pockets with zip
- » high zips along lower leg
- » elastic waistband with drawstring



*Very suitable for printing.
(Dealer takes care of printing.)





royal
808104 - 5000



red
808104 - 6000



black
808104 - 8000



navy
808104 - 7000

CORE TTS TOP ROUND NECK // UNISEX

Material: 100% polyester

JUNIOR: 128 - 140 - 152 - 164 / SENIOR: S - M - L - XL - XXL



SPECIFICATIONS

- » comfortable training top
- » brushed inner for optimal comfort
- » round neck made of elastic rib material
- » small piping decoration on front and back
- » cuffs made of elastic rib material



*Very suitable for printing.
(Dealer takes care of printing.)



black
832102 - 8000



navy
832102 - 7000

TTS PANTS // UNISEX

Material: 100% polyester

JUNIOR: 128 - 140 - 152 - 164 / SENIOR: S - M - L - XL - XXL



SPECIFICATIONS

- » comfortable training pants
- » brushed inner for optimal comfort
- » two side pockets with zip
- » high zips along lower leg
- » elastic waistband with drawstring



*Very suitable for printing.
(Dealer takes care of printing.)



Mix & Match

College Sock

Revolution X-Blade Hockey Shoe

page 42

page 125



royal
808607 - 5000

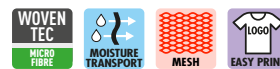
red
808607 - 6000

white
808607 - 2000

CORE WOVEN JACKET // LADIES

Material: 100% woven polyester

SENIOR: XS - S - M - L - XL



SPECIFICATIONS

- » comfortable jacket
- » ideal for use before and after sports
- » woven polyester for a luxurious look and soft feel
- » feminine shape and slightly longer fit
- » two side pockets with zip
- » mesh lining for breathability
- » waistband and cuffs made of elastic rib material



black
808607 - 8000

navy
808607 - 7000



*Very suitable for printing.
(Dealer takes care of printing.)



black
831602 - 8000

navy
831602 - 7000

CORE WOVEN PANTS // LADIES

Material: 100% woven polyester

SENIOR: XS - S - M - L - XL



SPECIFICATIONS

- » comfortable training pants
- » straight leg and female cut
- » soft mesh/tafetta lining
- » two side pockets with zip
- » contrasting coloured lines on the back for an extra flattering look
- » high zips along lower leg
- » elastic waistband with drawstring



*Very suitable for printing.
(Dealer takes care of printing.)



Mix & Match

Shark Hockey Shoe

RX-130 Skill Hyper Carbon Hockey Stick

page 127

page 111



royal
808103 - 5000

red
808103 - 6000

white
808103 - 2000

CORE WOVEN JACKET // UNISEX

Material: 100% woven polyester

JUNIOR: 116 - 128 - 140 - 152 - 164 / SENIOR: S - M - L - XL - XXL



SPECIFICATIONS

- » comfortable jacket for training and casual
- » woven polyester for luxurious look and soft feel
- » mesh lining for breathability
- » two side pockets with zip
- » waistband and cuffs made of elastic rib material



black
808103 - 8000

navy
808103 - 7000



*Very suitable for printing.
(Dealer takes care of printing.)



black
831101 - 8000

navy
831101 - 7000

CORE WOVEN PANTS // UNISEX

Material: 100% woven polyester

JUNIOR: 116 - 128 - 140 - 152 - 164 / SENIOR: S - M - L - XL - XXL



SPECIFICATIONS

- » comfortable training pants
- » mesh/tafetta lining for breathability
- » two side pockets with zip
- » elastic waistband with drawstring
- » high zips along lower leg
- » logo on back of the left leg



*Very suitable for printing.
(Dealer takes care of printing.)



Mix & Match

Devoon Hockey Shoe

page 127



royal
853603 - 5000

red
853603 - 6000

black
853603 - 8000



navy
853603 - 7000



orange
853603 - 3000

BREATHABLE TECH JACKET //

LADIES

Material: 40D nylon ripstop, TPU membrane,
5000mm*3000mvp

SENIOR: XS - S - M - L - XL



SPECIFICATIONS

- » comfortable jacket with mesh lining
- » high breathability
- » special TPU-membrane makes the jacket windproof and water resistant
- » supple fabric, feminine fit
- » taped seams
- » tight-fitting elastic cuffs
- » hidden hood inside collar



*Very suitable for printing.
(Dealer takes care of printing.)

BREATHABLE TECH PANTS //

LADIES

Material: 40D nylon ripstop, TPU membrane,
5000mm*3000mvp

SENIOR: XS - S - M - L - XL



SPECIFICATIONS

- » comfortable training pants with mesh/tafetta lining
- » high breathability
- » 40D nylon ripstop with special TPU-membrane makes the jacket windproof and water resistant
- » supple fabric, feminine fit
- » high zips along lower leg
- » taped seams
- » two side pockets with zip
- » back pocket



black
853604 - 8000



navy
853604 - 7000



*Very suitable for printing.
(Dealer takes care of printing.)



Mix & Match

Shark Hockey Shoe
Derby Backpack

page 127
page 136

BREATHABLE TECH JACKET // UNISEX

Material: 40D nylon ripstop, TPU membrane, 5000mm*3000mvp

JUNIOR: 116 - 128 - 140 - 152 - 164 / SENIOR: S - M - L - XL - XXL



SPECIFICATIONS

- » comfortable jacket with mesh lining
- » high breathability
- » special TPU-membrane makes the jacket windproof and water resistant
- » supple fabric
- » taped seams
- » tight-fitting elastic cuffs
- » hidden hood inside collar



*Very suitable for printing.
(Dealer takes care of printing.)



BREATHABLE TECH PANTS // UNISEX

Material: 40D nylon ripstop, TPU membrane, 5000mm*3000mvp

JUNIOR: 116 - 128 - 140 - 152 - 164 / SENIOR: S - M - L - XL - XXL



SPECIFICATIONS

- » comfortable training pants with mesh/tafetta lining
- » high breathability
- » 40D nylon ripstop with special TPU-membrane makes the jacket windproof and water resistant
- » supple fabric
- » high zips along lower leg
- » taped seams
- » two side pockets with zip
- » back pocket



*Very suitable for printing.
(Dealer takes care of printing.)



Mix & Match

Revolution X-Blade Hockey Shoe

page 125

CANBERRA COACH JACKET

// UNISEX

Material: 100% polyester

SENIOR: S - M - L - XL - XXL



SPECIFICATIONS

- » warm coach jacket with quilted lining
- » two-way zip on the front
- » two side pockets with zip
- » chest pocket with zip
- » elastic cord with stopper in the hem
- » storm flap with press studs
- » hood
- » elastic cuffs with adjustable velcro tape



*Very suitable for printing.
(Dealer takes care of printing.)



black
855101 - 8000

BREATHABLE TECH PANTS // UNISEX

Material: 40D nylon ripstop, TPU membrane, 5000mm*3000mvp

JUNIOR: 116 - 128 - 140 - 152 - 164 / SENIOR: S - M - L - XL - XXL



SPECIFICATIONS

- » comfortable training pants with mesh/tafetta lining
- » high breathability
- » 40D nylon ripstop with special TPU-membrane makes the jacket windproof and water resistant
- » supple fabric
- » high zips along lower leg
- » taped seams
- » two side pockets with zip
- » back pocket



black
853115 - 8000



*Very suitable for printing.
(Dealer takes care of printing.)

SPORTSWEAR









navy - white
865610 - 7200

VARSITY STRETCHED FIT JACKET FULL ZIP // LADIES

Material: 94% polyester, 6% elastane

SENIOR: XS - S - M - L - XL



SPECIFICATIONS

- » extra stretchy material, for an optimal fit
- » female fit
- » two pockets with zip
- » upright collar
- » embroidered logos



*Very suitable for printing.
(Dealer takes care of printing.)



navy - red
834629 - 7600

VARSITY STRETCHED FIT PANTS // LADIES

Material: 94% polyester, 6% elastane

SENIOR: XS - S - M - L - XL



SPECIFICATIONS

- » supple fabric
- » feminine fit
- » sturdy waistband for optimum wearing comfort
- » legs feature a long zip
- » two side pockets with zip
- » distinctive Reece lining on the back
- » embroidered logo on the knee



*Very suitable for printing.
(Dealer takes care of printing.)





pink
865609 - 0060



grey melange
865609 - 9160

VARSITY HOODED ZIP SWEAT // LADIES

Material: 90% cotton, 10% elastane

SENIOR: XS - S - M - L - XL



SPECIFICATIONS

- » comfortable top made of soft cotton
- » perfect to wear before and after sports
- » feminine fit
- » two pockets with zip
- » hood with drawstring
- » embroidered logos on the shoulders
- » printed logo on the chest



*Very suitable for printing.
(Dealer takes care of printing.)



grey melange
834630 - 9160

CLASSIC SWEAT PANTS // LADIES

Material: 90% cotton, 10% elastane

JUNIOR: 128 - 140 - 152 / SENIOR: XS - S - M - L - XL



SPECIFICATIONS

- » comfortable sweat pants
- » perfect fit
- » soft inner
- » connecting waistband with drawstring
- » elastic, connecting collars at the ankles
- » two side pockets
- » embroidered logo on the upper leg



*Very suitable for printing.
(Dealer takes care of printing.)





pink
808105 - 0060

grey melange
808105 - 9160

CLASSIC SWEAT TOP ROUND NECK // LADIES

Material: 90% cotton, 10% elastane

JUNIOR: 128 - 140 - 152 / SENIOR: XS - S - M - L - XL



SPECIFICATIONS

- » comfortable sweater
- » soft cotton logo on the chest
- » ideal for use before and after sports
- » soft, brushed inner
- » round neck
- » collar and cuffs made of elastic rib material



off white melange
808624 - 2010

TULA SWEAT TOP ROUND NECK // LADIES

Material: 85% cotton, 15% polyester

SENIOR: S - M - L - XL



SPECIFICATIONS

- » sporty sweater made of a comfortable, soft fabric
- » speckled with neon colours
- » collar and cuffs made of soft rib material
- » bow in the neck gives playful effect
- » suitable for both sport and casual



anthracite
834611 - 9990

grey melange
834611 - 9160

RUBY SWEAT PANTS // LADIES

Material: anthracite: 50% cotton, 50% polyester
grey melange: 65% cotton, 35% polyester

SENIOR: XS - S - M - L - XL



SPECIFICATIONS

- » ladies fit
- » soft, brushed inner for optimal comfort
- » elastic waistband with drawstring
- » two pockets with zip
- » distinctive Reece lining on the back





navy - white
865602 - 7200



grey - pink
865602 - 9310



anthracite
865602 - 9990

KATE HOODED ZIP SWEAT // LADIES

Material: 94% cotton, 6% lycra (navy, anthracite)
62% cotton, 32% polyester, 6% lycra (grey)

JUNIOR: 140 - 152 / SENIOR: XS - S - M - L - XL



SPECIFICATIONS

- » ladies fit
- » brushed inner for optimal comfort
- » two pockets with zip
- » collar and cuffs made of elastic rib material
- » ventilating mesh inserts under the arms
- » distinctive Reece lining on the back



*Very suitable for printing.
(Dealer takes care of printing.)



navy - white
834610 - 7200



grey - pink
834610 - 9310



anthracite
834610 - 9990

KATE SWEAT PANTS // LADIES

Material: 94% cotton, 6% lycra (navy, anthracite)
62% cotton, 32% polyester, 6% lycra (grey)

JUNIOR: 140 - 152 / SENIOR: XS - S - M - L - XL



SPECIFICATIONS

- » ladies fit
- » brushed inner for optimal comfort
- » elastic waistband
- » elastic on the inside of the ankles
- » two pockets with zip



*Very suitable for printing.
(Dealer takes care of printing.)





pink
860001 - 0060

royal - diva pink
860001 - 5364

neon coral melange
860001 - 3084

CLASSIC TEE // LADIES

Material: 50% cotton, 50% polyester

JUNIOR: 140 - 152 / SENIOR: XS - S - M - L - XL



SPECIFICATIONS

- » comfortable shirt with logo on the chest
- » suitable for sport and casual
- » ladies fit
- » available in different colours



grey melange
838603 - 9160

CLASSIC SWEAT SHORT // LADIES

Material: 90% cotton, 10% elastane

JUNIOR: 128 - 140 - 152 / SENIOR: XS - S - M - L - XL



SPECIFICATIONS

- » comfortable sweat shorts
- » ideal for sports and casual wear
- » soft, brushed inner
- » connecting waistband for a perfect fit
- » distinctive Reece detailing on the back
- » embroidered logo at the front



black
848605 - 8000

SENNA HOTPANTS // LADIES

Material: 85% polyester, 15% elastane

SENIOR: S - M - L - XL



SPECIFICATIONS

- » suitable for various sports
- » grey melange
- » comfortable elastic waistband
- » printed logo on front and back
- » key pocket





navy - white
808008 - 7200

VARSITY STRETCHED FIT JACKET FULL ZIP // UNISEX

Material: 94% polyester, 6% elastane

SENIOR: S - M - L - XL - XXL



SPECIFICATIONS

- » extra stretchy material, for an optimal fit
- » comfortable and warm
- » optimum wearing comfort
- » two pockets with zip
- » embroidered logos



*Very suitable for printing.
(Dealer takes care of printing.)



navy
832103 - 7000

VARSITY STRETCHED FIT PANTS // UNISEX

Material: 94% polyester, 6% elastane

SENIOR: S - M - L - XL - XXL



SPECIFICATIONS

- » supple fabric
- » perfect fit
- » elastic waistband for optimum wearing comfort
- » legs feature a long zip
- » two side pockets with zip
- » distinctive Reece lining on the back
- » embroidered logo on the knee



*Very suitable for printing.
(Dealer takes care of printing.)





navy
865111 - 7000



anthracite
865111 - 9990

VARSITY HOODED ZIP SWEAT // UNISEX

Material: 90% cotton, 10% elastane

JUNIOR: 128 - 140 - 152 - 164 / SENIOR: S - M - L - XL - XXL



SPECIFICATIONS

- » comfortable top made of soft cotton
- » added elastan for extra softness
- » perfect to wear before and after sports
- » two pockets with zip
- » hood with drawstring



*Very suitable for printing.
(Dealer takes care of printing.)



black
834205 - 8000

grey melange
834205 - 9160

navy
834205 - 7000

GREGORY JOGGING PANTS // UNISEX

Material: 65% cotton, 35% polyester

JUNIOR: 128 - 140 - 152 - 164 / SENIOR: S - M - L - XL - XXL



SPECIFICATIONS

- » soft inner for optimum comfort
- » tailored fit
- » elastic hem with drawstring
- » two side pockets with zip and a back pocket
- » logo on left thigh and right knee



*Very suitable for printing.
(Dealer takes care of printing.)





navy
865112 - 7000



anthracite
865112 - 9990

CLASSIC SWEAT TOP ROUND NECK // UNISEX

Material: 90% cotton, 10% elastane

JUNIOR: 128 - 140 - 152 - 164 / SENIOR: S - M - L - XL - XXL



SPECIFICATIONS

- » comfortable sweater
- » soft cotton logo on the chest
- » ideal for use before and after sports
- » soft, brushed inner
- » round neck
- » collar and cuffs made of elastic rib material



*Very suitable for printing.
(Dealer takes care of printing.)



grey - navy
860000 - 9010

grey - green
860000 - 9230



grey - coral
860000 - 9308

CLASSIC TEE // UNISEX

Material: 65% cotton, 35% polyester

SENIOR: S - M - L - XL - XXL



SPECIFICATIONS

- » comfortable shirt with logo on the chest
- » suitable for sport and casual
- » regular fit



*Very suitable for printing.
(Dealer takes care of printing.)





navy
855600 - 7000

VARSITY PUFFER JACKET // LADIES

Material: 100% nylon

SENIOR: XS - S - M - L - XL



SPECIFICATIONS

- » comfortable puffer jacket
- » soft and warm
- » two pockets with zip
- » two large inner pockets
- » collar and cuffs finished with elastic banding
- » fully padded and stitched
- » two-colour zip
- » logo on the chest



black - grey
856602 - 8990

JULIA QUILTED JACKET // LADIES

Material: body: 100% polyester,
sleeves: 80% polyester, 20% cotton

SENIOR: S - M - L - XL



SPECIFICATIONS

- » comfortable jacket with ladies fit
- » ideal for wearing before and after sports
- » quilted body and high collar keep you warm
- » long sleeves with thumb holes keep your hands warm
- » two pockets with copper coloured zips





navy
856003 - 7000

VARSITY PUFFER JACKET //

UNISEX

Material: 100% nylon

SENIOR: S - M - L - XL - XXL



SPECIFICATIONS

- » comfortable puffer jacket
- » soft and warm
- » two pockets with zip
- » two large inner pockets
- » collar and cuffs finished with elastic banding
- » fully padded and stitched
- » two-colour zip
- » logo on the chest



navy
856202 - 7915

NEWMAN BOMBER JACKET //

UNISEX

Material: 80% polyester, 15% rayon, 5% elastane
(quilted: 100% polyamide;
padding: 100% polyester)

SENIOR: XS - S - M - L - XL - XXL



SPECIFICATIONS

- » sporty jacket in college style
- » suitable for casual wear and before and after sports
- » quilted body for extra warmth
- » two side pockets
- » elastic hem with drawstring







PERFORMANCE JACKET //

LADIES

Material: 100% polyester

SENIOR: XS - S - M - L - XL



SPECIFICATIONS

- » jacket suitable for various sports
- » mesh zones for optimum ventilation
- » two side pockets with zip
- » key pocket with zip on the back
- » reflective prints and piping for visibility in the dark



black
859607 - 8000

neon yellow
859607 - 4190

PERFORMANCE TOP HALF ZIP //

LADIES

Material: 92% polyester, 8% elastane

SENIOR: XS - S - M - L - XL



SPECIFICATIONS

- » sports top suitable for various sports
- » ladies fit
- » keeps you warm: ideal for outdoor training
- » brushed inner feels soft
- » long sleeves with thumb holes keep your hands warm
- » reflective piping on zip and back
- » key pocket with zip on the back



black
851600 - 8000

grey melange
851600 - 9160

PERFORMANCE TIGHT //

LADIES

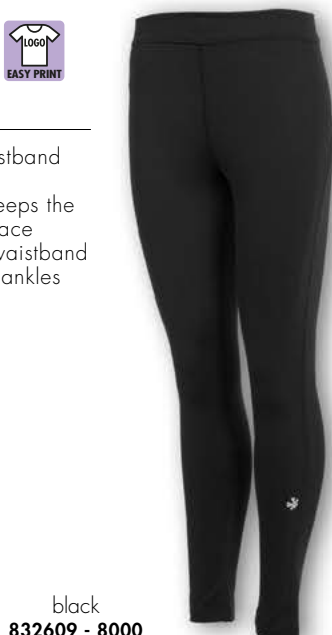
Material: 87% nylon, 13% elastane

SENIOR: XS - S - M - L - XL



SPECIFICATIONS

- » tights with high waistband and perfect fit
- » elastic waistband keeps the tights perfectly in place
- » key pockey inside waistband
- » fits tight around the ankles
- » reflective logos



black
832609 - 8000

PERFORMANCE TIGHT 7/8 //

LADIES

Material: 87% nylon, 13% elastane

SENIOR: XS - S - M - L - XL



SPECIFICATIONS

- » 7/8 tights with high waistband and perfect fit
- » elastic waistband keeps the tights perfectly in place
- » key pockey inside waistband
- » reflective logos
- » 7/8 model ends up just above the ankles



black
832610 - 8000



KIRAN MESH BOMBER JACKET // LADIES

Material: 100% polyester

SENIOR: S - M - L - XL



SPECIFICATIONS

- » bomber jacket with mesh structure
- » light and airy
- » two side pockets with zip
- » elastic waistband



off white
856607 - 2030

EDEN SINGLET // LADIES

Material: 92% polyester, 8% elastane

SENIOR: XS - S - M - L - XL



SPECIFICATIONS

- » ladies fit with racerback
- » ClimaTec finish keeps your skin dry
- » breathable mesh insert on lower back
- » slim fit
- » logo between shoulder blades



black
869615 - 8000

neon yellow
869615 - 4190

MOON HALF ZIP // LADIES

Material: 92% polyamide, 8% elastane

SENIOR: S - M - L - XL



SPECIFICATIONS

- » loose fit sport top
- » nice and warm
- » sweat-wicking qualities
- » zip to the chest
- » kangaroo pocket on the belly
- » long sleeves with thumb holes keep your hands warm



grey melange
865608 - 9160

LAUREN SHORT // LADIES

Material: 94% polyester, 6% elastane

SENIOR: S - M - L - XL



SPECIFICATIONS

- » multifunctional shorts
- » comfortable waistband
- » perfect fit
- » inner pants
- » soft, quick-drying material



black
838604 - 8000

JAI TIGHT // LADIES

Material: 92% polyamide, 8% elastane

SENIOR: S - M - L - XL



SPECIFICATIONS

- » three-quarter sport leggings
- » fitted style
- » comfortable waistband
- » right over the knee
- » playful detail: small notches outside knee



black
834622 - 8000



ROSHAN SHORTS // LADIES

Material: 87% nylon, 13% elastane

SENIOR: S - M - L - XL



SPECIFICATIONS

- » double layered sports shorts
- » perfect fit
- » airy outer layer with high split at the side
- » fitting inner shorts
- » elastic waistband with drawcord



safety yellow
838606 - 5998

VARUN JACKET // LADIES

Material: 100% polyester

SENIOR: S - M - L - XL



SPECIFICATIONS

- » airy jacket, made of water-repellent polyester
- » ideal for training in the rain
- » dot print
- » neon yellow zipper
- » reflective strip on the back



white
856608 - 2000

EVE SPORTS BRA // LADIES

Material: 95% polyamide, 5% elastane

SENIOR: S - M - L - XL



SPECIFICATIONS

- » stylish sports bra (medium support)
- » breathable material keeps the skin dry
- » racerback
- » sturdy elastic waistband
- » soft elastic shoulder straps



glossy black
848608 - 8002

black - grey
848608 - 8990

LEYLA TEE // LADIES

Material: 87% nylon, 13% elastane

SENIOR: S - M - L - XL



SPECIFICATIONS

- » comfortable sport shirt with shiny panels
- » mesh structure on the chest
- » decorative seams on the back
- » longer back
- » lining creates an optimal body shape



black
869617 - 8000

off white
869617 - 2030

dark sapphire
869617 - 7359

GEMMA ACTIVE PANTS // LADIES

Material: 92% polyester, 8% elastane

SENIOR: S - M - L - XL



SPECIFICATIONS

- » loose fit sport pants
- » light weight
- » elastic waistband
- » fitting around the ankles
- » ventilating mesh structure on the back



black
834615 - 8000





black
851200 - 8000



grey melange
851200 - 9160

PERFORMANCE TOP HALF ZIP // UNISEX

Material: 92% polyester, 8% elastane

SENIOR: S - M - L - XL - XXL



SPECIFICATIONS

- » sports top suitable for various sports
- » slim fit
- » keeps you warm: ideal for outdoor training
- » brushed inner feels soft
- » long sleeves with thumb holes keep your hands warm
- » reflective piping on zip and back
- » key pocket with zip on the back



black
859202 - 8000



neon yellow
859202 - 4190

PERFORMANCE JACKET // UNISEX

Material: 100% polyester

SENIOR: S - M - L - XL - XXL



SPECIFICATIONS

- » jacket suitable for various sports
- » mesh zones for optimum ventilation
- » two side pockets with zip
- » key pocket with zip on the back
- » reflective prints and piping for visibility in the dark



black
832200 - 8000



PERFORMANCE TIGHT // UNISEX

Material: 87% nylon, 13% elastane

SENIOR: S - M - L - XL - XXL



SPECIFICATIONS

- » ideal for outdoor sports
- » fitting model
- » brushed inner
- » zipped key pocket on the back
- » legs feature a zip
- » reflective piping and prints provide visibility in the dark





black
860202 - 8000



neon yellow
860202 - 4190

PERFORMANCE SHIRT // UNISEX

Material: 100% polyester

SENIOR: S - M - L - XL - XXL



SPECIFICATIONS

- » back of the t-shirt out is made entirely of polyester mesh
- » mesh provides optimum ventilation
- » front of the shirt made of a lightweight and supple fabric
- » sweat-wicking ClimaTec finish
- » round neck
- » reflective logos



black
838103 - 8000



navy
838103 - 7000



white
838103 - 2000

WILLIAM SHORT // UNISEX

Material: 96% polyester, 4% elastane

SENIOR: S - M - L - XL - XXL



SPECIFICATIONS

- » multifunctional shorts
- » made from an elastic, woven polyester for optimum comfort
- » ventilating mesh zones
- » two side pockets with zip (also suitable for tennis balls)
- » inner pants
- » elastic waistband with drawstring



black
834624 - 8000



navy
834624 - 7000

JAKE PANTS // UNISEX

Material: 96% polyester, 4% elastane

SENIOR: S - M - L - XL - XXL



SPECIFICATIONS

- » suitable for sports and casual wear
- » made from an elastic, woven polyester for optimum comfort
- » long zip at the bottom of the legs
- » two side pockets with zip (also suitable for tennis balls)
- » breathable mesh panels on the sides, back and back of the knee

SPORTS EQUIPMENT



© WSP/Frank Uijlenbroek



	PRO RANGE						CENTER RANGE					
MODEL	RX-130 Skill	RX-130 Power	RX-120 Skill	RX-120 Power	RX-110 Skill	RX-110 Power	RX-109	RX-108	RX-105	RX-95	RX-93	RX-92
												
SIZE	36,5" - 37,5"	36,5" - 37,5"	36,5" - 37,5"	36,5" - 37,5"	36,5" - 37,5"	36,5" - 37,5"	36,5"	36,5"	36,5"	36,5"	36,5"	36,5"
PAGE	111	111	113	113	115	115	115	117	117	118	118	119

The collection of hockey sticks from Reece is composed in such a way that young and old, professional and amateur can always choose a stick that exactly matches the personal wishes. Every stick from Reece has its own material mix that results in a specific stiffness and the associated properties. In addition, the curvature, the balance point and the length of the stick are important. Differences in this are in line with various playing styles and therefore with personal preferences.

MATERIAL

Most of our junior sticks consist of a combination of wood and fiberglass. While most senior sticks are made of synthetic material, combinations of carbon, kevlar, aramid and fiberglass. The ratio between these materials is decisive for the stiffness, the weight and feel of the stick. The exact composition can be found on each stick and in the product information text.

- » carbon: for extra stiffness and strength
- » aramid/kevlar: for vibration absorbing and impact reduction
- » fiberglass: for durability and strength
- » wood: for an optimal ball feeling

The percentage of carbon in a stick is an important indicator of the stiffness. The stiffer the hockey stick, the lower the energy loss in the bend of the stick. For this reason, players often choose sticks with a high carbon content when they're playing with strength and power. A less stiff stick enhances ball control. Ball control is important for the development of technique.

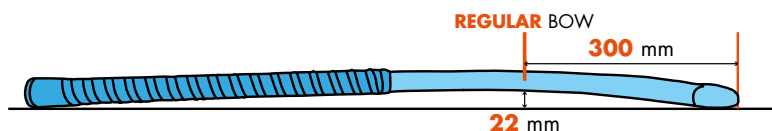
BOW / CURVATURE

Also, the curvature of a hockey stick is a very key feature. The curvature of the stick is referred to in millimetres and varies between 22 mm and 25 mm (with Reece). The greater the curvature, the more technical the game of the player often is. Playing with a strong curvature therefore requires some practice.

The bow indicates at what point the curvature begins in the stick. This can vary from a regular, medium to late bow.

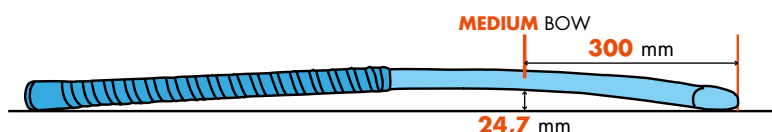
REGULAR BOW

- » curvature of 22 mm
- » bow in the middle of the stick
- » standard curve for all-round use



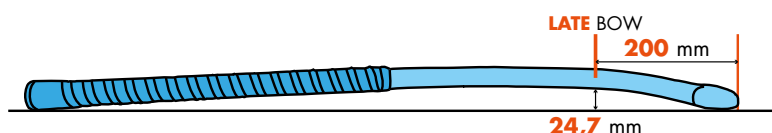
MEDIUM BOW

- » curvature of 24,7 mm
- » bow in the middle of the stick
- » optimal balance between control and easily hitting the ball
- » strong curvature for technical players



LATE BOW

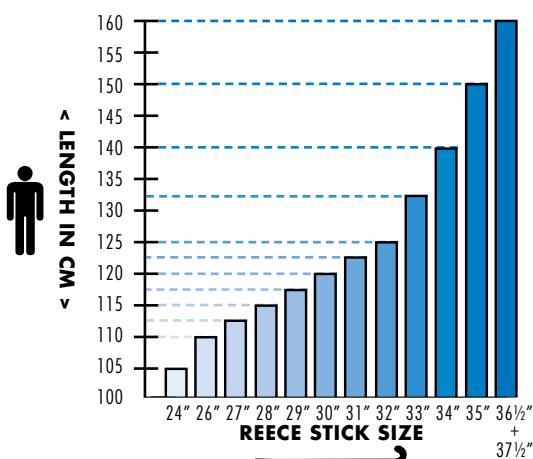
- » curvature of 24,7 mm
- » bow at the bottom of the stick
- » late bow makes it easier to push
- » strong curvature for technical players



	JUNIOR RANGE				INDOOR RANGE				
MODEL	RX-90		RX-60		IX-135	IX-125	IX-97	IX-92	IX-65
SIZE	30" - 35"		24" - 35"		36,5"	36,5"	36,5"	36,5"	30" - 35"
PAGE	120		121		122	122	122	123	123

LENGTH

Hockey sticks are available from size 24" up to size 37,5". Especially for children it is important to purchase the right size stick. Too short a stick decreases the impact force and has a negative influence on the body posture. A stick that is too long will cause difficulties with ball control and develops the wrong technique. The table gives a good indication of the right stick length at each height. But make sure you always get good advice with this!



QUALITY ADDITIONS

Besides the excellent properties of the core Reece sticks, some of our hockey sticks are equipped with various high quality additives.



NANO TUBE TECHNOLOGY

Sticks with this technology are made of hyper carbon fibre for even more power and feel. Hyper carbon provides high impact reduction and captures hard balls easily.



IDS

The IDS abbreviation stands for Integrated Damping System. The cap of the grip of the stick reduces vibration. This reduces the chance of arm injuries and allows for a smooth passage of the ball.



ULTRA LIGHT WEIGHT

With ultra light weight sticks, dribbling uses less force. In combination with a high carbon content, this delivers a light weight stick that allows the player to hit the ball hard.



XL-GRIP

Because many players have indicated that they find a longer grip more pleasant when playing, many sticks of Reece have an extra long grip.



Mats Grambusch

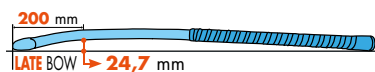
Established player in the German national team and player of Rot-Weiss Köln.

Mats was named one of the world's five best players of 2017.

RX-130 SKILL HYPER CARBON HOCKEY STICK

Material: synthetic, consists of 90% carbon and 10% kevlar

SIZES: 36,5" - 37,5"



SPECIFICATIONS

- » high quality lightweight senior hockey stick
- » extra long grip with added cork for cushioning
- » hyper carbon for even more power and feel
- » added titanium for extra stiffness
- » late bend at the bottom of the stick (24.7 mm) makes it easier to push
- » ideal for technical players
- » anti-vibration end cap reduces the likelihood of arm injuries

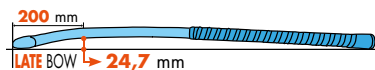


black - royal
889219 - 8500

RX-130 POWER HYPER CARBON HOCKEY STICK

Material: synthetic, consists of 90% carbon and 10% kevlar

SIZES: 36,5" - 37,5"



SPECIFICATIONS

- » high quality lightweight senior hockey stick
- » extra long grip
- » hyper carbon for even more power and feel
- » added titanium increases the stiffness of the stick
- » late bend at the bottom of the stick (24.7 mm) makes it easier to push
- » ideal for technical players
- » anti-vibration end cap reduces the likelihood of arm injuries



black - royal
889218 - 8500



Jelle Galema

Plays at the top club HC Oranje-Rood since 2009, they won the national championships in 2016. Jelle is also part of the Dutch national team.

RX-120 SKILL HYPER CARBON HOCKEY STICK

Material: synthetic, consists of 80% carbon, 10% kevlar and 10% fiberglass

SIZES: 36,5" - 37,5"



SPECIFICATIONS

- » high quality lightweight senior hockey stick
- » extra long grip with added cork for cushioning
- » hyper carbon for even more power and feel
- » added titanium increases the stiffness of the stick
- » medium bow for optimal balance between control and power
- » anti-vibration end cap reduces the likelihood of arm injuries



RX-120 POWER HYPER CARBON HOCKEY STICK

Material: synthetic, consists of 80% carbon, 10% kevlar and 10% fiberglass

SIZES: 36,5" - 37,5"



SPECIFICATIONS

- » high quality lightweight senior hockey stick
- » extra long grip
- » hyper carbon for even more power and feel
- » added titanium increases the stiffness of the stick
- » medium bow for optimal balance between control and power
- » anti-vibration end cap reduces the likelihood of arm injuries





Sian Keil

Striker for HC Den Bosch, became the national champion of the Netherlands last season. Also won the EHCC in 2017.

RX-110 SKILL HYPER CARBON HOCKEY STICK

Material: synthetic, consists of 70% carbon, 10% kevlar and 20% fiberglass

SIZES: 36,5" - 37,5"



SPECIFICATIONS

- » high quality lightweight senior hockey stick
- » extra long grip with added cork for cushioning
- » hyper carbon for even more power and feel
- » added titanium increases the stiffness of the stick
- » medium bow for optimal balance between control and power
- » anti-vibration end cap reduces the likelihood of arm injuries



black - yellow
889215 - 8400

RX-110 POWER HYPER CARBON HOCKEY STICK

Material: synthetic, consists of 70% carbon, 10% kevlar and 20% fiberglass

SIZES: 36,5" - 37,5"



SPECIFICATIONS

- » high quality lightweight senior hockey stick
- » extra long grip
- » hyper carbon for even more power and feel
- » added titanium increases the stiffness of the stick
- » medium bow for optimal balance between control and power
- » anti-vibration end cap reduces the likelihood of arm injuries



black - yellow
889214 - 8400

RX-109 // COMPOSITE SENIOR STICK

Material: synthetic, consists of 50% carbon, 40% fiberglass and 10% aramid

SIZES: 36,5"



SPECIFICATIONS

- » lightweight senior hockey stick
- » extra long grip
- » hyper carbon for even more power and feel
- » medium bow for optimal balance between control and power
- » ideal for technical players
- » fiberglass for durability and strength
- » added aramid for vibration damping and impact reduction
- » anti-vibration end cap reduces the likelihood of arm injuries



black - red
889225 - 8600



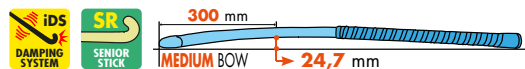
Glenn Schuurman

Player for Bloemendaal and the National team, already has an impressive honors list behind his name. His most recent prize: in 2017 he became European Champion with the Dutch team.

RX-108 // COMPOSITE SENIOR STICK

Material: synthetic, consists of 50% fiberglass, 40% carbon and 10% aramid

SIZE: 36,5"



SPECIFICATIONS

- » lightweight senior hockey stick
- » extra long grip
- » hyper carbon for even more power and feel
- » medium bow for optimal balance between control and power
- » ideal for technical players
- » fiberglass for durability and strength
- » added aramid for vibration damping and impact reduction
- » anti-vibration end cap reduces the likelihood of arm injuries

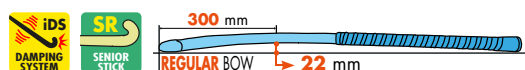


orange
889206 - 3000

RX-105 // COMPOSITE SENIOR STICK

Material: synthetic, consists of 70% fiberglass, 20% carbon and 10% aramid

SIZE: 36,5"



SPECIFICATIONS

- » allround senior hockey stick
- » regular bow with 22 mm curvature
- » 70% fiberglass for durability and strength
- » optimal ball control
- » hyper carbon for even more power and feel
- » standard bend for allround use
- » anti-vibration end cap reduces the likelihood of arm injuries



royal - red
889205 - 5600

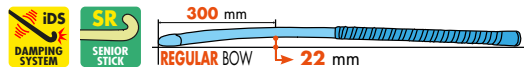


copper
889205 - 1900

RX-95 // COMPOSITE SENIOR STICK

Material: synthetic, consists of 75% fiberglass, 15% carbon and 10% aramid

SIZE: 36,5"



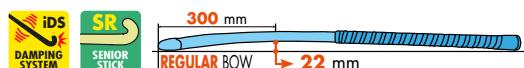
SPECIFICATIONS

- › allround senior hockey stick
- › regular bow with 22 mm curvature
- › 75% fiberglass for durability and strength
- › optimal ball control
- › hyper carbon for even more power and feel
- › standard bend for allround use
- › anti-vibration end cap reduces the likelihood of arm injuries

black - royal
889207 - 8500blue - neon pink
889207 - 5066**RX-93 // COMPOSITE SENIOR STICK**

Material: synthetic, consists of 75% fiberglass, 15% carbon and 10% aramid

SIZE: 36,5"



SPECIFICATIONS

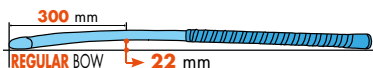
- › allround senior hockey stick
- › regular bow with 22 mm curvature
- › 75% fiberglass for durability and strength
- › optimal ball control
- › aramid for vibration damping and impact reduction
- › standard bend for allround use
- › anti-vibration end cap reduces the likelihood of arm injuries

black - silver
889015 - 8910aqua blue - pink
889015 - 5186

RX-92 // COMPOSITE SENIOR STICK

Material: synthetic, consists of 80% fiberglass, 10% carbon and 10% aramid

SIZE: 36,5"



SPECIFICATIONS

- » allround senior hockey stick
- » regular bow with 22 mm curvature
- » 80% fiberglass for durability and strength
- » standard bend for allround use
- » aramid for vibration damping and impact reduction
- » hyper carbon for even more power and feel
- » anti-vibration end cap reduces the likelihood of arm injuries

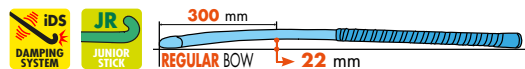


black - neon yellow
889210 - 8410

RX-90 // COMPOSITE JUNIOR STICK

Material: synthetic, consists of 95% fiberglass and 5% aramid

SIZES: 30" - 31" - 32" - 33" - 34" - 35"



SPECIFICATIONS

- » allround junior hockey stick
- » regular bow with 22 mm curvature
- » 95% fiberglass for durability and strength
- » standard bend for allround use
- » added aramid for vibration damping and impact reduction
- » anti-vibration end cap reduces the likelihood of arm injuries



black - silver
889014 - 8970

pink - royal
889014 - 6110

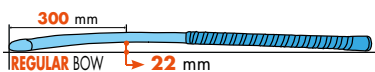
royal - green
889014 - 5110

blue - neon pink
889014 - 5066

RX-60 // WOODEN JUNIOR STICK

Material: wood, reinforced with fiberglass

SIZES: 24" - 26" - 27" - 28" - 29" - 30" - 31" - 32" - 33" - 34" - 35"



SPECIFICATIONS

- » junior hockey stick
- » regular bow with 22 mm curvature
- » wood for an optimal ball feeling
- » added fiberglass for durability and strength
- » standard bend for allround use
- » anti-vibration end cap reduces the likelihood of arm injuries



black - royal
889012 - 8500

black - neon yellow
889012 - 8410

pink - royal
889012 - 6110

blue - orange
889012 - 5333

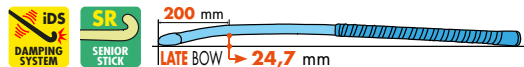
green - pink
889012 - 1480

pink
889012 - 0060

IX-135 // COMPOSITE SENIOR INDOOR STICK

Material: synthetic, consists of 70% wood, 20% kevlar and 10% fiberglass

SIZE: 36,5"

black - white
889221 - 8200

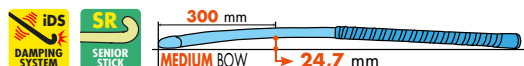
SPECIFICATIONS

- » late bow at the bottom of the stick makes it easier to push
- » strong curvature ideal for technical players
- » wood for optimal ball feeling
- » added fiberglass for durability and strength
- » anti-vibration end cap reduces the likelihood of arm injuries

IX-125 // COMPOSITE SENIOR INDOOR STICK

Material: synthetic, consists of 70% wood, 20% kevlar and 10% fiberglass

SIZE: 36,5"

white - black
889220 - 2800

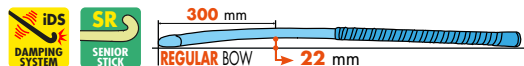
SPECIFICATIONS

- » medium bow for optimal balance between control and easy pushing
- » strong curvature ideal for technical players
- » wood for optimal ball feeling
- » added fiberglass for durability and strength
- » anti-vibration end cap reduces the likelihood of arm injuries

IX-97 // COMPOSITE SENIOR INDOOR STICK

Material: synthetic, consists of 95% fiberglass and 5% aramid

SIZE: 36,5"

royal - red
889200 - 5600

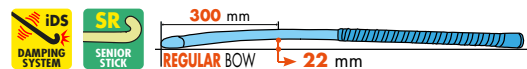
SPECIFICATIONS

- » regular bow with 22 mm curvature
- » 95% fiberglass for durability and strength
- » standard bend for allround use
- » added aramid for vibration damping and impact reduction
- » anti-vibration end cap reduces the likelihood of arm injuries

IX-92 // WOODEN SENIOR INDOOR STICK

Material: wood, reinforced with fiberglass

SIZE: 36,5"



SPECIFICATIONS

- » regular bow with 22 mm curvature
- » wood for an optimal ball feeling
- » added fiberglass for durability and strength
- » standard bend for allround use
- » anti-vibration end cap reduces the likelihood of arm injuries



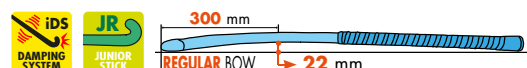
blue - neon pink
889209 - 5066

black - red
889209 - 8600

IX-65 // WOODEN JUNIOR INDOOR STICK

Material: wood, reinforced with fiberglass

SIZES: 30" - 31" - 32" - 33" - 34" - 35"



SPECIFICATIONS

- » regular bow with 22 mm curvature
- » wood for an optimal ball feeling
- » added fiberglass for durability and strength
- » standard bend for allround use
- » anti-vibration end cap reduces the likelihood of arm injuries



green - pink
889013 - 1480

black - white
889013 - 8200



REVOLUTION X-BLADE HOCKEY SHOE

SENIOR: 3,5 - 4 - 5 - 6 - 6,5 - 7 - 7,5 - 8 - 8,5 - 9 - 9,5 - 10 - 10,5 - 11 - 12

SPECIFICATIONS

- » lightweight senior hockey shoe for optimum speed and control
- » excellent grip with studded sole
- » anti-wear layer on the front of the shoe
- » reinforced, shock-absorbing midsole
- » removable, breathable insole



coral
875211 - 3080
SIZES: 3,5 to 8



yellow - black
875211 - 4800
SIZES: 3,5 to 12





DEVOON HOCKEY SHOE

SENIOR: 3,5 - 4 - 5 - 6 - 6,5 - 7 - 7,5 - 8 - 8,5 - 9 - 9,5 - 10 - 10,5 - 11 - 12



aqua blue - neon yellow

875208 - 7770

SIZES: 3,5 to 8



black - green

875208 - 8010

SIZES: 3,5 to 12

SPECIFICATIONS

- » top hockey shoe
- » cleated sole gives a perfect grip
- » anti-wear layer on the nose of the shoe
- » with an extra absorbing insole
- » lightweight, shock-absorbing midsole
- » two different designs

SHARK HOCKEY SHOE

SENIOR: 3,5 - 4 - 5 - 6 - 6,5 - 7 - 7,5 - 8 - 8,5 - 9 - 9,5 - 10 - 10,5 - 11 - 12



pink - light blue

875207 - 0655

SIZES: 3,5 to 8



yellow - red

875207 - 4600

SIZES: 3,5 to 12

SPECIFICATIONS

- » top hockey shoe
- » cleated sole gives a perfect grip
- » with an extra absorbing insole
- » lightweight, shock-absorbing midsole
- » three different designs



BULLY X80 HOCKEY SHOE OUTDOOR

JUNIOR: 28 - 29 - 30 - 31 - 32 - 33 - 34 - 35 - 36 - 37 - 38

SPECIFICATIONS

- » excellent grip with studded sole
- » lightweight, shock-absorbing midsole
- » available in various designs
- » velcro closure (size 28-35) or lacing (size 36-38)



pink - blue - yellow
875212 - 0654



royal - orange
875212 - 5370

BULLY X80 HOCKEY SHOE OUTDOOR

JUNIOR: 28 - 29 - 30 - 31 - 32 - 33 - 34 - 35 - 36 - 37 - 38

SPECIFICATIONS

- » excellent grip with studded sole
- » lightweight, shock-absorbing midsole
- » available in various designs
- » lacing



neon yellow
875212 - 4190



red
875212 - 6000



BULLY X80 HOCKEY SHOE INDOOR

JUNIOR: 28 - 29 - 30 - 31 - 32 - 33 - 34 - 35 - 36 - 37 - 38

SPECIFICATIONS

- » durable natural rubber sole
- » outsole features pivot for improved maneuverability
- » lightweight, shock-absorbing midsole
- » available in various designs



knockout pink
875213 - 3888



royal
875213 - 5000

SIMPSON HOCKEY BAG

Material: PU, polyester

SIZE: 45 CM X 26 CM X 16 CM (WXHxD)



SPECIFICATIONS

- » multifunctional sports bag
- » stick-it-through compartment
- » shoulder handle and adjustable shoulder strap
- » inside key pocket with zip and a telephone pocket



pink
885801 - 0060



multi
885801 - 9770



navy - red
885801 - 7600



black - gold
885801 - 8160



black - pink
885801 - 8180



coral
885801 - 3080



NORTHAM BACKPACK

Material: 600D polyester, PVC

SIZE: 34 X 42 CM X 21 CM (WXHXD)



SPECIFICATIONS

- » multifunctional backpack
- » stick-it-through compartment
- » adjustable shoulder straps
- » spacious compartment with smaller pocket on the front and mesh pocket on the side
- » reflective prints on all sides



navy - red
885813 - 7600



pink - silver
885813 - 0690



pink - neon yellow
885813 - 6460



army green
885813 - 1030



navy - orange
885813 - 7300

SPORTS EQUIPMENT

BACKPACK XL

Material: 600D polyester, PVC

SIZE: 33 X 50 X 19 CM (WXHxD)



SPECIFICATIONS

- › extra spacious backpack
- › adjustable shoulder straps
- › two spacious compartments and a mesh pocket at the side



black
885814 - 8000

EVANS HOCKEY BACKPACK

Material: 600D polyester, PVC

SIZE: 34 X 42 X 21 CM (WXHxD)



SPECIFICATIONS

- › multifunctional sports bag
- › stick-it-through compartment
- › adjustable shoulder straps
- › two large pockets and mesh side pocket



grey
885803 - 9000



black
885803 - 8000



royal
885809 - 5000



red
885809 - 6000

JUNIOR STICK BAG

Material: high quality polyester and PVC

SIZE: 20 X 90 X 13 CM (WXHxD)



SPECIFICATIONS

- » stick bag for junior hockey sticks
- » adjustable shoulder straps
- » multi pockets with zips
- » silicone handle
- » suitable for a maximum of four hockey sticks

GIANT STICK BAG

Material: high quality polyester and PVC

SIZE: 25 CM X 100 CM X 30 CM (WXHxD)



SPECIFICATIONS

- » spacious stick bag
- » provided with backpack straps, an adjustable shoulder strap and a silicone handle
- » many pockets with zips
- » suitable for a maximum of six hockey sticks
- » provided with name tag



black
685802 - 8000



bright red
685802 - 6640



bright royal
685802 - 5160

TROLLEY BAG MEDIUM

Material: 600D polyester

SIZE: 32 CM X 54 CM X 28 CM (WXHxD)



SPECIFICATIONS

- › 48 cu litre capacity
- › smoothly rolling wheels
- › adjustable handgrip and strong retractable handle
- › various spacious storage compartments with zips
- › bag can be used as a backpack using a hidden carrying harness
- › suitable for hand luggage



black
885805 - 8000

TROLLEY BAG LARGE

Material: 600D polyester

SIZE: 37 CM X 76 CM X 36 CM (WXHxD)



SPECIFICATIONS

- › 99 cu litre capacity
- › smoothly rolling wheels
- › adjustable handgrip and strong retractable handle
- › various spacious storage compartments with zips
- › bag can be used as a backpack using a hidden carrying harness



black
885806 - 8000

NOTEBOOK BAG

Material: 600D polyester

SIZE: 39 CM X 31 CM X 15 CM (WXHxD)



SPECIFICATIONS

- » suitable for laptops up to 15,6 inch
- » multiple compartments with zips
- » adjustable and detachable shoulder strap
- » luggage strap for easy attachment to trolley case



black
885807 - 8000

GLENFIELD BALL BAG

Material: 600D polyester, PVC

SIZE: 35 CM HEIGHT, DIAMETER 23 CM



SPECIFICATIONS

- » bag for hockey balls
- » hard plastic bottom for extra reinforcement
- » space for 36 hockey balls



black
885810 - 8000

BUNBURY SPORTS BAG

Material: PVC, ripstop

SIZE: 51 CM X 32 CM X 28 CM (WXHxD)



SPECIFICATIONS

- » spacious sports bag
- » suitable for various sports and activities
- » big central pocket, two side pockets and mesh side pocket



black
885812 - 8000



DERBY BACKPACK

Material: 600D polyester, PVC

SIZE: 34 X 44 X 20 CM (WXHxD)



SPECIFICATIONS

- › multifunctional sports bag
- › stick-it-through compartment
- › extra inner compartment
- › front pocket with zip
- › adjustable shoulder straps
- › reflective prints



black
885817 - 8000

black - orange
885817 - 8300



black
885816 - 8000



black - orange
885816 - 8300

DERBY STICK BAG SMALL

Material: polyester, PVC

SIZE: 19 X 98 X 14 CM (WXHxD)



SPECIFICATIONS

- » hockey bag with room for four sticks
- » several pockets with zips
- » two mesh pockets on the sides
- » adjustable shoulder straps
- » silicone handle
- » reflective prints



black
885815 - 8000



black - orange
885815 - 8300

DERBY STICK BAG

Material: polyester, PVC

SIZE: 24 X 100 X 24 CM (WXHxD)



SPECIFICATIONS

- » hockey bag with room for six sticks
- » several pockets with zips
- » two mesh pockets on the sides
- » adjustable shoulder straps
- » silicone handle
- » reflective prints

SHINGUARD ELMORE

SIZES: S - M - L

SPECIFICATIONS

- » hard scale for optimum protection
- » shin and ankle protection
- » anatomic fit
- » velcro closure



SHINGUARD LAVERTON

SIZES: S - M - L

SPECIFICATIONS

- » hard scale for optimum protection
- » shin and ankle protection
- » anatomic fit
- » velcro closure on the front



SHINGUARD FOSTER

SIZES: JUNIOR - SENIOR

SPECIFICATIONS

- » chrome shinguard
- » hard scale
- » shin and ankle protection
- » velcro closure
- » anatomic fit



SHINGUARD BLACKBULL MESH

SIZES: PUPIL - JUNIOR - SENIOR

SPECIFICATIONS

- » hard scale for optimum protection
- » shin and ankle protection
- » anatomic fit



SHINGUARD GECKO

SIZES: SENIOR

SPECIFICATIONS

- » provided with ankle protection
- » hard scale for optimum protection
- » velcro closure
- » anatomic fit





MOUTHGUARD DENTAL IMPACT SHIELD

SIZES: JUNIOR - SENIOR

SPECIFICATIONS

- » mouthguard
- » different colours
- » including storage box



royal - orange
889100 - 5370



white - orange
889100 - 2300



pink
889100 - 0060



white - black
889100 - 2800



blue - green
889100 - 5950



no colour
889100 - 1111

MOUTHGUARD CLARE

SIZES: JUNIOR - SENIOR

SPECIFICATIONS

- » mouthguard
- » different colours
- » including storage box



pink
889107 - 0060



lime
889107 - 1740



orange
889107 - 3000

SPORTS EQUIPMENT

CONTROL PROTECTION GLOVE

Material: fleece, TPU, rubber

SIZES: XS - S - M - L

SPECIFICATIONS

- › hard cap on top
- › protection of five fingers
- › silicone grip on the fingers
- › open palm
- › velcro closure
- › packed per piece (left)



black - pink
889026 - 8180



black - yellow
889026 - 8400

PROTECTION GLOVE HALF FINGER

Material: leather, EVA

SIZES: XXS - XS - S - M - L - XL

SPECIFICATIONS

- › firm padding on the upper hand
- › without thumb protection
- › innerhand made of leather
- › packed per piece (left)



pink
889001 - 0060



orange
889001 - 3000



orange - yellow
889001 - 3400



yellow - red - black
889001 - 4680

COMFORT GLOVE HALF FINGER

Material: EVA foam

SIZES: XXS - XS - S - M - L - XL

SPECIFICATIONS

- › firm padding on the upper hand
- › without thumb protection
- › silicone grip zone in the palm
- › velcro closure
- › packed per piece (left)



pink
889025 - 0060



orange
889025 - 3000



royal
889025 - 5000



black
889025 - 8000

ELITE FASHION GLOVE HALF FINGER

Material: leather, TPU

SIZES: XXS - XS - S - M - L

SPECIFICATIONS

- › upper provided with plastic cap for protection of the knuckles
- › without thumb protection
- › innerhand made of leather
- › packed per piece (left)



blue
889104 - 5510



pink
889104 - 0060



black
889002 - 8000

PROTECTION GLOVE FULL FINGER

Material: leather, EVA

SIZES: XXS - XS - S - M - L - XL

SPECIFICATIONS

- » upper provided with plastic cap for protection of the knuckles
- » without thumb protection
- » innerhand made of leather
- » packed per piece (left)



pink
889024 - 0060



black
889024 - 8000

COMFORT GLOVE FULL FINGER

Material: EVA foam

SIZES: XXS - XS - S - M - L - XL

SPECIFICATIONS

- » firm padding on upper hand
- » protection of five fingers
- » silicone grip zone in the palm
- » velcro closure
- » packed per piece (left)



navy - yellow
889023 - 7400

ELITE PROTECTION GLOVE FULL FINGER

Material: leather, EVA

SIZES: XXS - XS - S - M - L

SPECIFICATIONS

- » padded upper hand
- » velcro closure
- » packed per piece (left)

KNITTED PLAYER GLOVE

Material: 95% acryl, 5% elastane

SIZES: JUNIOR - SENIOR

SPECIFICATIONS

- » knitted glove
- » provided with silicone nubs for better grip
- » packed per pair



black
889003 - 8000

pink
889003 - 0060

KNITTED PLAYER GLOVE 2 IN 1

Material: 95% acryl, 5% elastane

SIZES: JUNIOR - SENIOR

SPECIFICATIONS

- » 2 in 1 glove
- » both gloves (full and 1/2 finger) are provided with silicone nubs for better grip
- » packed per pair



red - black
889011 - 6800

pink - black
889011 - 6390

royal - black
889011 - 5800

POWER PLAYER GLOVE

Material: fleece, Neoprene

SIZES: XXS - XS - S - M - L - XL

SPECIFICATIONS

- » comfortable, warm glove
- » mobile patch on index fingers
- » inside of high-quality fleece
- » outside of dirt-repellent neoprene
- » extra grip on fingertips and palm
- » reflective prints



black
889027 - 8000

black - pink
889027 - 8180

ADAPTABALL
Challenging training ball with imbalance
• increases responsiveness
• promotes versatility
• improves adaptability

REV3RSE STICK
Unique, mirrored stick
• increases adaptability
• improves technique
• enhances ball control

For more information, please visit:
REECEAUSTRALIA.COM/INT/ASM

ASM ADAPTABALL

Material: PU / PVC

SPECIFICATIONS

- » ASM training ball
- » counterweight for slight deviation in ball behaviour
- » improves responsiveness and technique
- » two different levels of deviation
- » yellow: minimal, orange: extra challenging
- » outside: PVC with dimple design or flat design
- » inside: hollow
- » developed from the vision of the Athletic Skills Model

SPECIFICATIONS

- » mirrored training stick that you use left-handed
- » variation in training
- » improves adaptability and technique
- » light weight
- » extra long grip
- » anti-vibration end cap reduces the risk of arm injuries
- » developed from the vision of the Athletic Skills Model

ASM REV3RSE HOCKEYSTICK

Material: synthetic, consists of 80% fiberglass, 5% carbon and 15% aramid

JUNIOR: 32" - 33" - 34" - 35"

SENIOR: 36,5"



JUNIOR

black - white
889222 - 8200

SENIOR

black - white
889223 - 8200

HOCKEY BALLS DIMPLE PREMIUM

Material: PVC

SPECIFICATIONS

- › highest quality match ball for field hockey
- › outside: PVC with dimple design
- › inside: cork/rubber
- › made with the latest rotational molding technology, gives the balls the perfect balance and the right thickness
- › two different logos
- › packed per 6 pieces in a box



white
889020 - 2000

HOCKEY BALLS DIMPLE ULTRA

Material: PVC

SPECIFICATIONS

- › field hockey: match quality
- › outside: PVC with dimple design
- › inside: hollow
- › made with the latest rotational molding technology, gives the balls the perfect balance and the right thickness
- › packed per 12 pieces in a box



white
889021 - 2000

HOCKEY BALLS MATCH ULTRA

Material: PVC

SPECIFICATIONS

- › field hockey: match quality
- › outside: PVC with flat design
- › inside: hollow
- › made with the latest rotational molding technology, gives the balls the perfect balance and the right thickness
- › packed per 12 pieces in a box



white
889022 - 2000

HOCKEY BALLS MATCH

Material: PVC

SPECIFICATIONS

- › field hockey: training & match quality
- › outside: PVC with flat design
- › inside: hollow
- › packed per 12 pieces in a box



white
889009 - 2000

silver
889006 - 0110



knockout pink
889006 - 3888



HOCKEY BALLS GLITTER

Material: PVC

SPECIFICATIONS

- » glitter design
- » outside: PVC with flat design
- » inside: hollow
- » packed per 12 pieces in a box



blue
889006 - 5130

orange
889017 - 3000



knockout pink
889017 - 3888



HOCKEY BALLS STREET

Material: PVC

SPECIFICATIONS

- » colourful design
- » packed per 12 pieces in a box



blue
889017 - 5130

multi
889016 - 9770



HOCKEY BALLS FANTASY

Material: PVC

SPECIFICATIONS

- » outside: PVC with flat design
- » inside: hollow
- » three different colourful designs
- » packed per 12 pieces in a box

yellow
889010 - 4000



HOCKEY BALLS INDOOR

Material: PVC

SPECIFICATIONS

- » indoor hockey: training & match quality
- » outside: PVC with flat design
- » inside: hollow
- » packed per 12 pieces in a box

PROFESSIONAL HOCKEY GRIP

Material: PU

LENGTH 1,8 M, WIDTH 3 CM, THICKNESS 1,8 MM

SPECIFICATIONS

- » water-absorbing durable grip
- » non-slip grip surface
- » extra soft and cushioned feel
- » self adhesive
- » easy to apply



white
889805 - 2000



lime
889805 - 1740



pink
889805 - 0060



black
889805 - 8000

DESIGN HOCKEY GRIP

Material: PU

LENGTH 1,8 M, WIDTH 3 CM, THICKNESS 1,8 MM

SPECIFICATIONS

- » water-absorbing durable grip
- » non-slip grip surface
- » extra soft and cushioned feel
- » self adhesive
- » easy to apply



pink - purple
889806 - 0670



army green
889806 - 1030



blue - neon coral
889806 - 5761



blue - neon yellow
889806 - 5460



purple - pink - white
889806 - 0630



orange - green
889806 - 3100



yellow - red - black
889806 - 4680

CHAMOIS GRIP

Material: chamois leather

LENGTH 1,5 M, WIDTH 3 CM

SPECIFICATIONS

- » original chamois grip
- » anti slip and shock absorbing



889804 - 0000

COTTON TAPE

Material: 100% cotton

LENGTH 9 M, WIDTH 3,8 CM

SPECIFICATIONS

- » packed in a one piece blisterpackage



pink
889800 - 0060



white
889800 - 2000



bright royal
889800 - 5160



black
889800 - 8000

LAKELAND MESH BIBS

SIZES: MINI - JUNIOR - SENIOR



pink
889827 - 0060

royal
889827 - 5000

yellow
889827 - 4000

orange
889827 - 3000

SPECIFICATIONS

- » professional training bib
- » breathable mesh structure
- » excellent for printing
- » available in various colours and sizes



black
889803 - 8000

REFEREE CARD SET

Material: PVC

SPECIFICATIONS

- » set of 1 yellow, 1 red and 1 green card
- » incl. notepad and case



black
489828 - 0000

STOPWATCH

Material: PVC

SPECIFICATIONS

- » 1/100 second stopwatch with lap time
- » 12/24 hour-date system
- » alarm function
- » water-resistant structure
- » incl. lithium battery and lanyard



yellow
489813 - 4000

red
489813 - 6000

black
489813 - 8000

REFEREE WHISTLE FOX 40

Material: plastic

SPECIFICATIONS

- » professional referee whistle
- » available in 3 colours



CAMDEN HAIRBAND

Material: 54% rubber, 23% polyester, 23% nylon

SIZES: ONE SIZE

SPECIFICATIONS

- » hair straps for sports
- » non-slip material on the inside to avoid sliding
- » packed per 3 pieces



pink - blue - pink
889808 - 0656



green - purple - coral
889808 - 1043

HAIRBAND NON SLIP

Material: 70% rubber, 30% polyester

SIZES: ONE SIZE

SPECIFICATIONS

- » hair straps for sports
- » non-slip material on the inside to avoid sliding
- » provided with silver reflective strips
- » packed per 3 pieces



red - white - black
889801 - 6280



blue - pink - black
889801 - 9760

FOCUS HEADBAND

SIZES: ONE SIZE

SPECIFICATIONS

- » comfortable fit
- » headband is to tie
- » keeps hair out of your eyes
- » ClimaTec finish with sweat-wicking qualities
- » for training and competitions



black
889828 - 8000



white
889828 - 2000



neon yellow
889828 - 4190



white
888804 - 2000



red
888804 - 6000



black
888804 - 8000

WRISTBAND

Material: 100% cotton

SIZES: ONE SIZE

SPECIFICATIONS

- » wristband made of 100% cotton
- » packed per pair



multi colour
888801 - 0600



white
888801 - 2000



black
888801 - 8000

KNITTED FASHION HAT

Material: 100% acrylic

SIZES: ONE SIZE

SPECIFICATIONS

- » knitted hat with fleece-band on the inside



sparkling cosmo
889825 - 6666



royal
889825 - 5000

BOTTLE SET

Material: PVC

0,75 L

SPECIFICATIONS

- » in pink and blue
- » removable screw cap
- » packed per 6



pink
889826 - 0060



green
889826 - 1000

DALBY BOTTLE

0,65 L

SPECIFICATIONS

- » bottle of flexible silicone material
- » lightweight and foldable
- » strong anti-leak cap
- » measure indication (in milliliters)
- » non-toxic and BPA free



INSTAGRAMMED!

Tag us @reece_australia



REGISTER

ART.NO.	ARTICLE NAME	PAGE	ART.NO.	ARTICLE NAME	PAGE	ART.NO.	ARTICLE NAME	PAGE
440105	RING SOCK	46	848608	VARUN JACKET // LADIES	101	889002	PROTECTION GLOVE FULL FINGER	141
440106	COMBI SOCK	45	851200	PERFORMANCE TOP HALF ZIP // UNISEX	103	889003	KNITTED PLAYER GLOVE	142
440107	UNI SOCK	44	851600	PERFORMANCE TIGHT // LADIES	97	889006	HOCKEY BALLS GLITTER	145
440108	ORIGINAL SOCK	48	853114	BREATHABLE TECH JACKET // UNISEX	69	889009	HOCKEY BALLS MATCH	144
440111	RING FOOTLESS SOCK	49	853115	BREATHABLE TECH PANTS // UNISEX	69	889010	HOCKEY BALLS INDOOR	145
440112	UNI FOOTLESS SOCK	49	853115	BREATHABLE TECH PANTS // UNISEX	71	889011	KNITTED PLAYER GLOVE 2 IN 1	142
440114	LEAGUE SOCK	47	853603	BREATHABLE TECH JACKET // LADIES	67	889012	RX-60 // WOODEN JUNIOR STICK	121
489813	REFEREE WHISTLE FOX 40	147	853604	BREATHABLE TECH PANTS // LADIES	67	889013	IX-65 // WOODEN JUNIOR INDOOR STICK	123
489828	STOPWATCH	147	855101	CANBERRA COACH JACKET // UNISEX	71	889014	RX-90 // COMPOSITE JUNIOR STICK	120
685902	JUNIOR STICK BAG	133	855600	VARSITY PUFFER JACKET // LADIES	91	889015	RX-93 // COMPOSITE SENIOR STICK	118
808001	CORE TTS HOODED SWEAT FULL ZIP // LADIES SPECIAL	57	856003	VARSITY PUFFER JACKET // UNISEX	93	889016	HOCKEY BALLS FANTASY	145
808002	VARSITY TTS JACKET FULL ZIP // UNISEX	55	856202	NEWMAN BOMBER JACKET // UNISEX	93	889017	HOCKEY BALLS STREET	145
808008	VARSITY STRETCHED FIT JACKET FULL ZIP // UNISEX	85	856602	JULIA QUILTED JACKET // LADIES	91	889020	HOCKEY BALLS DIMPLE PREMIUM	144
808103	CORE WOVEN PANTS // UNISEX	65	856607	KIRAN MESH BOMBER JACKET // LADIES	99	889021	HOCKEY BALLS DIMPLE ULTRA	144
808104	CORE TTS TOP ROUND NECK // UNISEX	61	856608	LEYLA TEE // LADIES	101	889022	HOCKEY BALLS MATCH ULTRA	144
808105	CLASSIC SWEAT TOP ROUND NECK // LADIES	79	859202	PERFORMANCE JACKET // UNISEX	103	889023	ELITE PROTECTION GLOVE FULL FINGER	141
808607	CORE WOVEN PANTS // LADIES	63	859607	PERFORMANCE JACKET // LADIES	97	889024	COMFORT GLOVE FULL FINGER	141
808624	TULA SWEAT TOP ROUND NECK // LADIES	79	860000	CLASSIC TEE // UNISEX	89	889025	COMFORT GLOVE HALF FINGER	140
808639	CORE TTS HOODED SWEAT FULL ZIP // LADIES	57	860001	CLASSIC TEE // LADIES	83	889026	CONTROL PROTECTION GLOVE	140
808640	CORE TTS HOODED SWEAT FULL ZIP // UNISEX	59	860202	PERFORMANCE SHIRT // UNISEX	105	889027	POWER PLAYER GLOVE	142
808647	VARSITY TTS JACKET FULL ZIP // LADIES	53	863106	DARWIN CLIMATEC POLO // UNISEX	25	889028	ASM ADAPTABALL DIMPLE	143
810201	CORE SHIRT // UNISEX	19	863107	ISA CLIMATEC POLO // LADIES	23	889029	ASM ADAPTABALL PLAIN	143
810601	CORE SHIRT // LADIES	17	865111	VARSITY HOODED ZIP SWEAT // UNISEX	87	889100	MOUTHGUARD DENTAL IMPACT SHIELD	139
815302	LUKE GOALKEEPER SHIRT // UNISEX	33	865112	CLASSIC SWEAT TOP ROUND NECK // UNISEX	89	889104	ELITE FASHION GLOVE HALF FINGER	140
831101	CORE WOVEN JACKET // UNISEX	65	865602	KATE HOODED ZIP SWEAT // LADIES	81	889107	MOUTHGUARD CLARE	139
831602	CORE WOVEN JACKET // LADIES	63	865608	EDEN SINGLET // LADIES	99	889200	IX-97 // COMPOSITE SENIOR INDOOR STICK	122
832102	TTS PANTS // UNISEX	55	865609	VARSITY HOODED ZIP SWEAT // LADIES	77	889205	RX-105 // COMPOSITE SENIOR STICK	117
832102	TTS PANTS // UNISEX	59	865610	VARSITY STRETCHED FIT JACKET FULL ZIP // LADIES	75	889206	RX-108 // COMPOSITE SENIOR STICK	117
832102	TTS PANTS // UNISEX	61	869604	AMY LONGSLEEVE // LADIES	37	889207	RX-95 // COMPOSITE SENIOR STICK	118
832103	VARSITY STRETCHED FIT PANTS // UNISEX	85	869615	EDEN SINGLET // LADIES	21	889209	IX-92 // WOODEN SENIOR INDOOR STICK	123
832200	PERFORMANCE TIGHT // UNISEX	103	869615	LAUREN SHORT // LADIES	99	889210	RX-92 // COMPOSITE SENIOR STICK	119
832609	PERFORMANCE TOP HALF ZIP // LADIES	97	869617	GEMMA ACTIVE PANTS // LADIES	101	889214	RX-110 POWER HYPER CARBON STICK	115
832610	PERFORMANCE TIGHT 7/8 // LADIES	97	875207	SHARK HOCKEY SHOE	127	889215	RX-110 SKILL HYPER CARBON STICK	115
834205	GREGORY JOGGING PANTS // UNISEX	87	875208	DEVOON HOCKEY SHOE	127	889216	RX-120 POWER HYPER CARBON STICK	113
834610	KATE SWEAT PANTS // LADIES	81	875211	REVOLUTION X-BLADE HOCKEY SHOE	125	889217	RX-120 SKILL HYPER CARBON STICK	113
834611	RUBY SWEAT PANTS // LADIES	79	875212	BULLY X80 HOCKEY SHOE OUTDOOR	128	889218	RX-130 POWER HYPER CARBON STICK	111
834615	EVE SPORTS BRA // LADIES	101	875213	BULLY X80 HOCKEY SHOE INDOOR	129	889219	RX-130 SKILL HYPER CARBON STICK	111
834622	MOON HALF ZIP // LADIES	99	882102	SHINGUARD LAVERTON	138	889220	IX-125 // COMPOSITE SENIOR INDOOR STICK	122
834624	JAKE PANTS // UNISEX	31	882105	SHINGUARD GECKO	138	889221	IX-135 // COMPOSITE SENIOR INDOOR STICK	122
834624	JAKE PANTS // UNISEX	105	882106	SHINGUARD BLACKBULL MESH	138	889222	ASM REVERSE STICK JUNIOR	143
834629	VARSITY STRETCHED FIT PANTS // LADIES	75	882107	SHINGUARD ELMORE	138	889223	ASM REVERSE STICK SENIOR	143
834630	CLASSIC SWEAT PANTS // LADIES	77	882108	SHINGUARD FOSTER	138	889225	RX-109 // COMPOSITE SENIOR STICK	115
834634	TTS PANTS // LADIES	53	885801	SIMPSON HOCKEY BAG	130	889800	COTTON TAPE	146
834634	TTS PANTS // LADIES	57	885803	EVANS HOCKEY BACKPACK	132	889801	HAIRBAND NON SLIP	148
837101	LEGACY SHORT // UNISEX	29	885805	TROLLEY BAG MEDIUM	134	889803	REFEREE CARD SET	147
838103	WILLIAM SHORT // UNISEX	31	885806	TROLLEY BAG LARGE	134	889804	CHAMOIS GRIP	146
838103	WILLIAM SHORT // UNISEX	105	885807	NOTEBOOK BAG	135	889805	PROFESSIONAL HOCKEY GRIP	146
838603	CLASSIC SWEAT SHORT // LADIES	83	885809	GIANT STICK BAG	133	889806	DESIGN HOCKEY GRIP	146
838604	JAI TIGHT // LADIES	99	885810	GLENFIELD BALL BAG	135	889808	CAMDEN HAIRBAND	148
838606	ROSHAN SHORTS // LADIES	101	885812	BUNBURY SPORTS BAG	135	889825	BOTTLE SET	149
839101	FUNDAMENTAL SKORT // LADIES	27	885813	NORTHAM BACKPACK	131	889826	DALBY BOTTLE	149
840110	COLLEGE SOCK	42	885814	BACKPACK XL	132	889827	LAKELAND MESH BIBS	147
840115	NUMBAA SPECIAL SOCK	43	885815	DERBY STICK BAG	137	889828	FOCUS HEADBAND	148
840116	CURTAIN SOCK	41	885816	DERBY STICK BAG SMALL	137			
846206	BASELAYER // UNISEX	39	885817	DERBY BACKPACK	136			
846601	CORE SPORTS BRA // LADIES	35	888801	KNITTED FASHION HAT	149			
846602	OLIVIA BRA // LADIES	35	888804	WRISTBAND	149			
848605	SENNA HOTPANTS // LADIES	83	889001	PROTECTION GLOVE HALF FINGER	140			

SIZE CHART

TEXTILE UNISEX		
EU SIZE	REECE SIZE	UK SIZE
44	164 / SMALL	34 / 36
46	SMALL	36
48	MEDIUM	38
50 / 52	LARGE	40 / 42
54 / 56	X-LARGE	44 / 46
58	XX-LARGE	48
60	XXX-LARGE	50

TEXTILE LADIES		
EU SIZE	REECE SIZE	UK SIZE
32 / 34	X-SMALL	6 / 8
34 / 36	SMALL	8 / 10
36 / 38	MEDIUM	12 / 14
40 / 42	LARGE	16 / 18
42 / 44	X-LARGE	18 / 20

TEXTILE KIDS		
EU SIZE	REECE SIZE	UK SIZE
116	116	6
128	128	8
140	140 (XXS)	10
152	152 (XS)	12
164	164 (S)	14

SHINGUARDS		
REECE SIZE	EU SIZE AVERAGE HEIGHT IN CM	UK SIZE AVERAGE HEIGHT IN FEET
PUPIL (S)	140 CM	4'7" FEET
JUNIOR (M)	160 CM	5'3" FEET
SENIOR (L)	180 CM	5'11" FEET

SHOES SENIOR																		
UK	3½	4	4½	5	5½	6	6½	7	7½	8	8½	9	9½	10	10½	11	11½	12
US	4½	5	5½	6	6½	7	7½	8	8½	9	9½	10	10½	11	11½	12	12½	13
Europe	36	37	37½	38	39	40	40½	41	42	42½	43	43½	44	44½	45	46	47	

SHOES JUNIOR																		
UK jr	8	9	10	11	11½	12	13	1	2	2½	3							
US	9½	10	11	12	12½	13	1	2	2½	3½	4							
Europe	26	27	28	29	30	31	32	33	34	35	35½							

ON PHOTOGRAPHIC REPRODUCTION AND PRINT SOME COLOUR CHANGES MAY OCCUR BETWEEN PICTURES AND ORIGINAL PRODUCTS. WE RESERVE THE RIGHT TO MAKE PRODUCT/TECHNICAL CHANGES (IN DESIGN, COLOUR, FUNCTION AND MATERIAL), WHICH WE FEEL, WILL MAKE FOR IMPROVEMENT OF THE PRODUCT. WE WILL NOT ACCEPT ANY RESPONSIBILITY FOR PRINTING ERRORS IN THE CATALOGUE!

GARMENT CARE: REECE AUSTRALIA PRODUCTS ARE MADE TO THE HIGHEST STANDARDS AND ARE SUBJECT TO STRICT QUALITY CONTROL PROCEDURES. GARMENTS HOWEVER CAN DISCOLOUR DUE TO SUBSTANCES SUCH AS LINIMENT OR OIL, AND OF COURSE PERSPIRATION, ALL OF WHICH MAY NOT BE FULLY REMOVABLE BY WASHING. THE EXTENT OF DISCOLOURATION CAN BE GREATLY REDUCED BY FOLLOWING A FEW SIMPLE PROCEDURES. SOAKING AND/OR WASHING OF THE GARMENT IN WATER AND DETERGENT AS SOON AS POSSIBLE AFTER USE CAN REDUCE DISCOLOURATION, USING AT LEAST THE SAME VOLUME OF WATER AS THE GARMENT BEING TREATED. ALWAYS FOLLOW DETERGENT MANUFACTURERS INSTRUCTIONS, ESPECIALLY THOSE INTENDED TO TACKLE HEAVY STAINS AND AVOID PRODUCTS CONTAINING BLEACH. REECE AUSTRALIA CANNOT ACCEPT ANY LIABILITY FOR DISCOLOURATION OR DAMAGE TO GARMENTS RESULTING FROM STAINING CAUSED BY ELEMENTS FOREIGN TO THE MATERIALS USED IN MANUFACTURE.

REECE AUSTRALIA RESERVES THE RIGHT TO MODIFY PRODUCT SPECIFICATIONS AND PRICES AT ANY GIVEN TIME.

MATERIALS



Comfortable, warm, light-weight, fast drying and easy to maintain. The advanced microfibres give optimal body fluid transport and keeps you comfortable in many different conditions.



The use of microfiber increases the comfort of the fit and gives the material a soft feeling. Microfiber materials have a high quality look and feel.



High technical quality. By combining different yarns the garments are very comfortable and suitable for sport and leisure use. Suitable for training and intensive use, colour and shape retaining. Suitable for printing.



TTS is a highly functional and durable material. Extremely suitable for strenuous exercise. The material is easy to wash which simplifies maintenance.



High quality, very comfortable. Light weight. Water- and windproof, pu-coated, with taped seams, and breathable. The advanced micro-fiber yarns give optimal transportation of body fluid and keep you comfortable in various conditions.



Sportpolyester has a thermal effect and is easy to wash, which simplifies maintenance. It protects against cold wind and is a great combination of a functional and durable product.



Polypropylene is a thermal, ultra light fibre. It is moisture resistant and moisture transportable. Polypropylene is 100% real colour, unshrinkable and recyclable. It gives perfect comfort to your feet and avoids skin irritation. Polypropylene is specifically used for high-quality hockey socks.



High quality material, used in our thermal baselayer. Stretchable, forms to the contours of the body and feels like a second skin. The material is light weight, dries quickly and is isolating, by retaining the body temperature.

SYMBOLS



BREATHABLE MATERIAL



KEEP WARM



LADIES FIT



REGULAR FIT



SLIM FIT



MOISTURE TRANSPORTATION



WATERPROOF



WINDPROOF



STRETCH MATERIAL



MESH MATERIAL



ANTI BACTERIAL



PRINTABLE (TEXTILE)



REFLECTIVE



PRINTABLE (BAGS)



LEFT-RIGHT SYSTEM



JUNIOR HOCKEY STICK



SENIOR HOCKEY STICK



INTEGRATED DAMPING SYSTEM HOCKEY STICK



LIGHT WEIGHT



EXTRA LONG GRIP HOCKEY STICK



HYPER CARBON HOCKEY STICK



BAG WITH HOCKEY STICK COMPARTMENT

art.nr. 699837



8 714575 390504 >